

Attachment 9

Community Information

Wilpinjong Coal Community Factsheet

December 2014, Issue 1



Extension Project

Wilpinjong Coal Mine is located in the developing western coalfields of NSW and produces high quality thermal coal for domestic and export markets.

Approval for Wilpinjong Coal Mine was granted in February 2006 and first coal was railed from the site in October the same year. Peabody Energy purchased the mine in the fourth quarter of 2006.

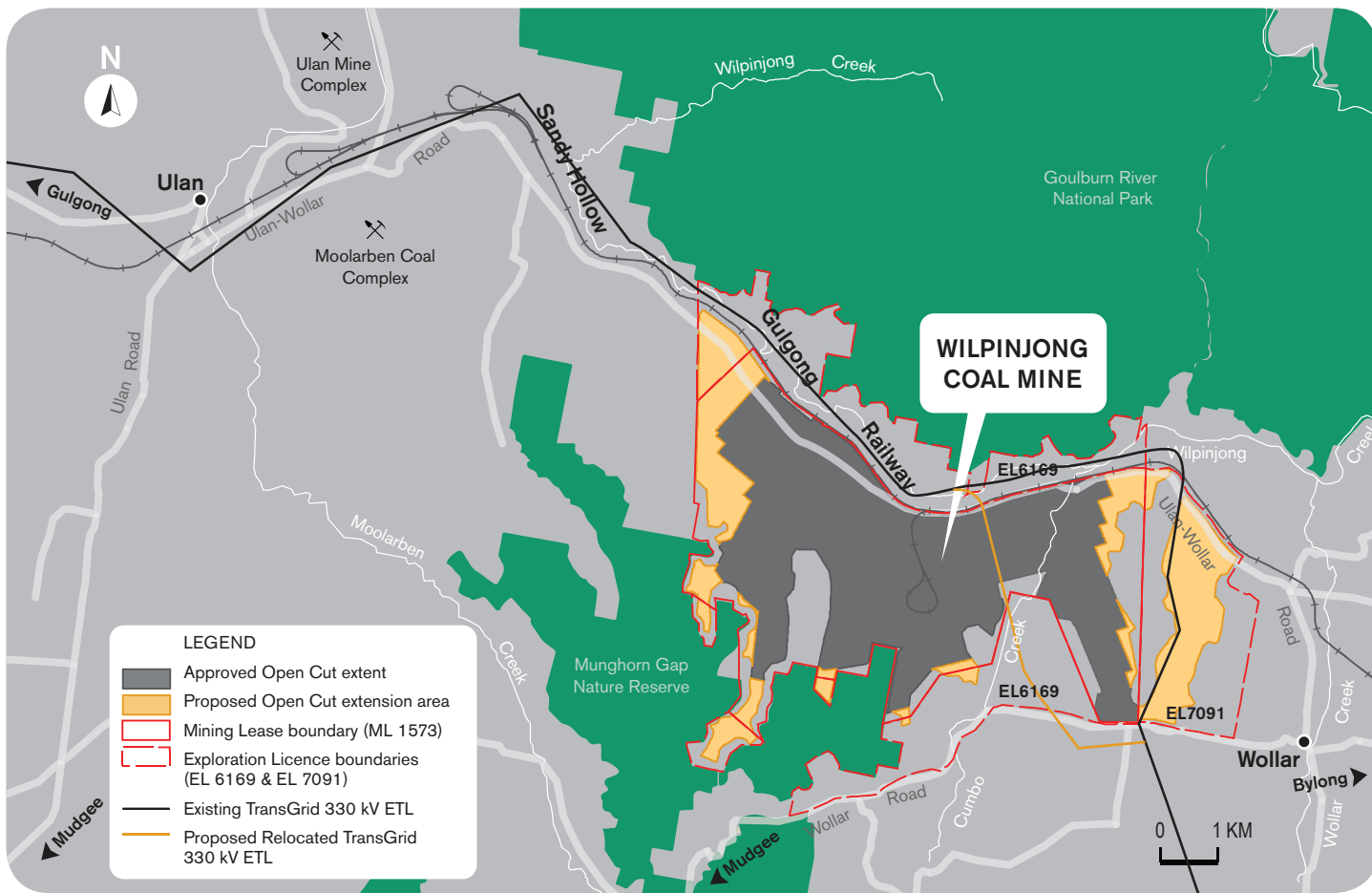
Peabody Energy has commenced the process of seeking planning approval for an extension of the life of the Wilpinjong Coal Mine, within its existing Mining Lease and Exploration License tenements.

The Wilpinjong Extension Project (the Project) will be the subject of a full Environmental Impact Statement (EIS) and if approved, would involve approximately 800 hectares of open-cut extensions, including development of a new open cut pit in Slate Gully.

Peabody is committed to keeping the community up-to-date about Wilpinjong's operations and welcomes community participation in the EIS process.

Wilpinjong Coal Mine is a significant contributor to the local economy and an important asset to the people of NSW. The mine provides low-cost domestic coal to AGL (formerly Macquarie Generation) which accounts for approximately 7-10 % of NSW energy consumption, securing the energy needs of thousands of NSW residents.

Extension Project



The Proposal

The proposed mine extension would support an additional operating life of seven years.

The Project would continue to use the existing mine coal handling and processing infrastructure, including the rail load out facility. The main components of the Project would include:

- Extension to the mine life, from 2026 to 2033
- A continued production rate of 16 million tonnes per annum (Mtpa) of run-of-mine (ROM) coal
- A production rate of 13Mtpa of saleable coal
- Approximately 800 hectares of open cut extensions including:
 - 500 hectares of incremental extensions to the existing open cut pits in areas of Mining Lease 1573 and Exploration Licence 6169
 - A new open cut pit of 300 hectares in Exploration Licence 7091 (Slate Gully)
- Augmentation of site mobile fleet (extra excavator, haul trucks and ancillary equipment)

- A construction workforce of up to approximately 100
- A peak operational workforce of approximately 625

The project would also involve:

- Additional supporting infrastructure such as haul roads, up-catchment diversions, access tracks, and general mining and water management infrastructure
- Relocation of a section of the Wollar to Wellington 330 kilovolt electricity transmission line to allow mining in Slate Gully and relocation of sections of the Ulan-Wollar Road

If approved, the Project would provide job security for the mine's approved 500-strong workforce and continued delivery of the positive social and economic contributions of the mine to local communities and the broader region.



Environmental Impact Statement

Wilpinjong is undertaking a rigorous assessment of potential environmental impacts of the Project as part of the EIS, in line with NSW Government requirements. As part of this process, Peabody will be required to demonstrate to the NSW Government that it can manage or mitigate impacts to the Government's satisfaction, before the Project can be approved.

Peabody Energy is proceeding with a range of specialist environmental assessments for the EIS that include

evaluation of potential Project impacts on operational noise, blasting, air quality, water resources, heritage and ecology.

Social Impact Assessment

A Social Impact Assessment will also be undertaken to identify the Project's potential impacts and benefits in relation to community values and social conditions in local and regional communities. Further information on the specialist studies, including the results of key studies will be available at later stages of the EIS process.



Extension Project

NSW Government Planning Approval Process: State Significant Development

STEP 1

Preparation of EIS
(approx 12 months)

Peabody undertakes preliminary project work and requests Environmental Assessment Requirements from NSW Government
(These will be posted on DP&E website)

COMPANY

Peabody consults with the community, Council and Agencies and prepares Environmental Impact Statement (EIS)

Peabody lodges Development Application (DA) and EIS

STEP 2

Exhibition and Consultation

Public exhibition period and input (submissions) from community, Council and government agencies

COMMUNITY

GOVERNMENT

COMPANY

Peabody reviews and responds to submissions

STEP 3

Assessment and Determination

Government (DP&E) develops assessment including draft conditions

COMMUNITY

GOVERNMENT

Planning Assessment Commission conducts public hearing and makes determination

Complete stages

Remaining stages

For more information on the NSW Government approvals process visit
<http://www.planning.nsw.gov.au/>

How can I get involved?

Local community members will have opportunities to provide input into the EIS for the Project during:

- The Social Impact Assessment
- Continued monthly local community drop-in sessions at the Wollar General Store
- The EIS public exhibition period

Peabody will continue to keep the community informed about the Project and additional opportunities for input into the process as the EIS proceeds via subsequent newsletters.

Peabody
ENERGY

To register your interest for future information:

Phone: 1300 606 625

Email: jlees@peabodyenergy.com

Visit: Wollar General Store between 1.30-4.30pm on first Thursday of the month

www.peabodyenergy.com

Wilpinjong Coal Community Factsheet

May 2015, Issue 2



Extension Project

Wilpinjong Coal Mine is located in the developing western coalfields of NSW and produces high quality thermal coal for domestic and export markets.

Peabody Energy is seeking planning approval for an extension of the life of the Wilpinjong Coal Mine, within its existing Mining Lease and Exploration License tenements. If approved, The Wilpinjong Extension Project (the Project) would involve approximately 800 hectares of open-cut extensions, including development of a new open-cut pit in Slate Gully.

The Project will be subject to a rigorous assessment of potential environmental impacts via a full Environmental Impact Statement (EIS). As part of this process, Peabody will be required to demonstrate to the NSW Government that it can manage or mitigate impacts to the Government's satisfaction, before the Project can be approved.

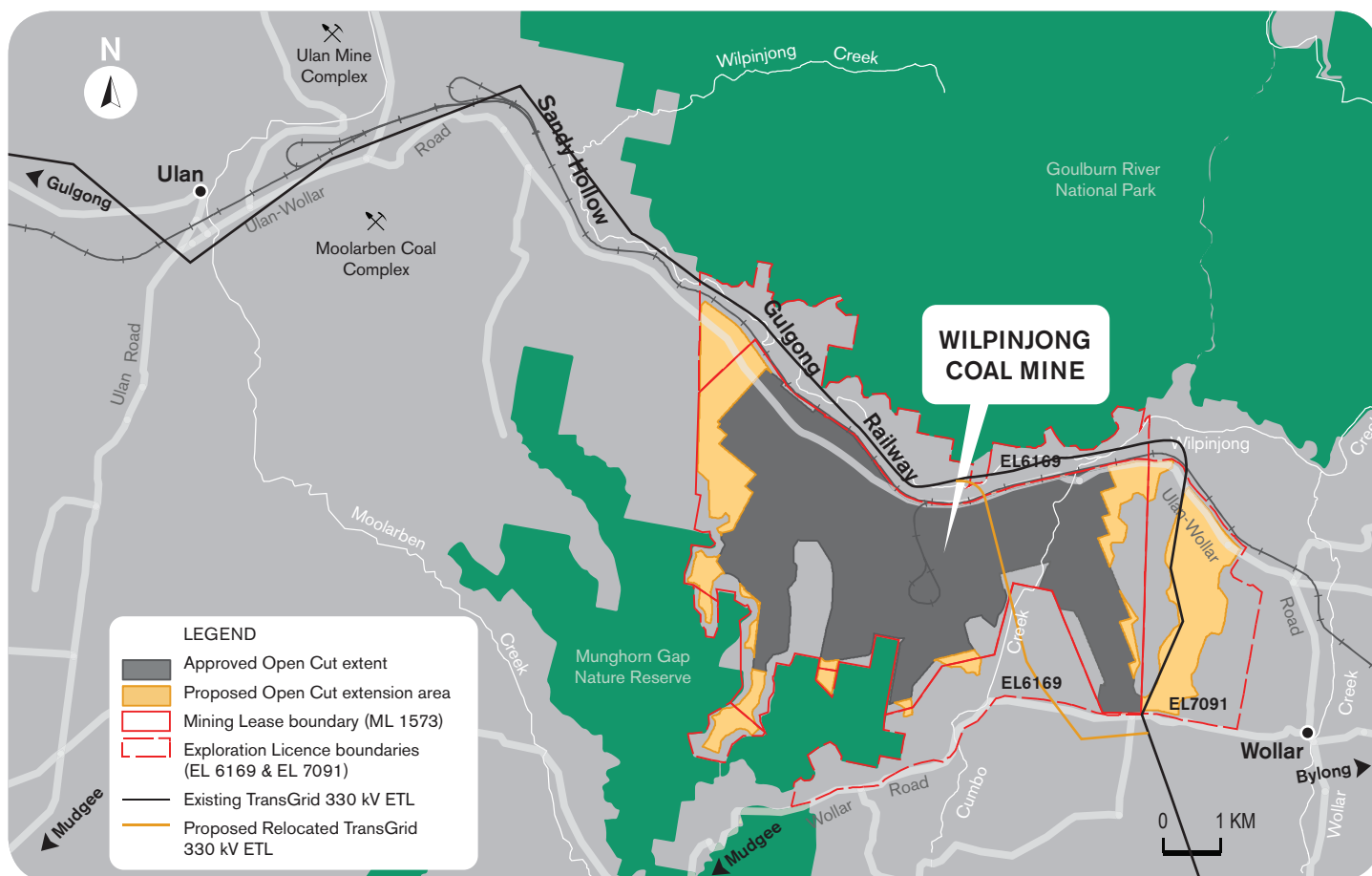
More detail about the Project is available:

- On Wilpinjong's website – (*See, Community Factsheet Issue 1, December 2014*)
- On NSW Department of Planning & Environment website (Major Projects Assessments page)
- By contacting us (*See, page 4 of this fact sheet*).

Peabody is committed to keeping the community up-to-date about Wilpinjong's operations and encourages community participation in the EIS process.

Wilpinjong Coal Mine is a significant contributor to the local economy and an important asset to the people of NSW. The mine provides low-cost domestic coal to AGL (formerly Macquarie Generation) which accounts for approximately 7-10 % of NSW energy consumption, securing the energy needs of thousands of NSW residents.

Extension Project



PROJECT UPDATE

EIS studies including studies into noise, air quality, surface and groundwater, biodiversity, cultural heritage, social and community infrastructure are underway. Some preliminary findings are outlined in this update, and the community will be kept up-to-date with details of studies as they conclude.

Key Project Developments

- The Project's Secretary's Environmental Assessment Requirements (SEARs) were received. These provide an overview of the studies Wilpinjong must address as part of the Project's EIS. To view the SEARs go to: http://majorprojects.planning.nsw.gov.au/index.pl?action=view_job&job_id=6764
- A Site Verification Certificate confirmed no 'Biophysical Strategic Agricultural Land' exists within the Project area.
- The Project was referred to the Federal Government under the *EPBC Act* and was deemed a 'Controlled Action' in March 2015. This means the Project will undergo assessment under the *EPBC Act* via the bilateral agreement with the NSW government.

SOCIAL IMPACT ASSESSMENT

Community interviews

As part of the Project's Social Impact Assessment, specialist company, Elliot Whiteing has completed face-to-face interviews with a number of local stakeholders. These included existing and former Wollar area residents, government agencies, business and community organisations. The interviews focused on potential social impacts and benefits that could arise from the Project.

Community survey

A wider community survey, advertised in the Mudgee Guardian ran on-line between 9 February and 20 March 2015. Reply paid hardcopy community surveys were also made locally available. Approximately 25% of community survey participants were from Wollar, Mogo Road or Barigan Valley, with the remainder primarily from the rest of the Mid-Western Regional Council area.

Key potential social benefits identified by respondents included:

- **Broader Mid-Western Regional Council area:**
 - Economic growth, increase in population and employment, greater building activity and business opportunities, more rates for Council infrastructure

If approved, the Project would provide job security for the mine's approved 500-strong workforce and continued delivery of the positive social and economic contributions of the mine to local communities and the broader region.

Key potential social concerns identified by respondents included:

- **Wollar area:** Stress and uncertainty about the future, impacts on social and community values, loss of local services
- **Broader Mid-Western Regional Council area:** Inflation of housing and living costs, strain on local services

Detailed survey findings will be available in the EIS.

Employee survey

As part of the Social Impact Assessment, Elliot Whiteing conducted a survey of 325 Wilpinjong employees and contractors. Draft findings indicate that of the survey participants approximately:

- 88% identified they resided in the Mid-Western Regional Council area (55% in Mudgee)
- 90% donated to a charity or community organisation on an annual basis, and half participated in a community voluntary organisation
- 76% did their weekly shopping in Mudgee.

- The Project would extend the benefits of Wilpinjong employee investment and participation in the community.
- Wilpinjong employment would increase to up to 625 people at its peak (2018-2024).

Wilpinjong Coal would like to thank all participants in the SIA interviews and surveys for their input to this important component of the Project assessment.

HERITAGE STUDIES

Heritage specialists Niche Environment and Heritage and South East Archaeology have completed Historical and Aboriginal heritage surveys of the Project area. The Aboriginal heritage surveys were undertaken accompanied by representatives of the Registered Aboriginal Parties.

These studies identified a range of heritage sites within the open cut extension areas or surrounds, which include:

- Remnants of a shale oil mine located in Slate Gully, including a historical mine shaft
- Various locally-significant heritage buildings, or ruins
- Rock shelters with Aboriginal artefacts and/or art
- Aboriginal artefacts, artefact scatters and scarred trees
- Cultural values identified by the contemporary Aboriginal community.

Peabody will implement measures to manage potential impacts to heritage sites. Management and mitigation measures will be documented in the heritage assessment reports.

OTHER STUDIES

Traffic: Additional traffic surveys on Ulan Road and Ulan-Wollar road are being undertaken to document recent reductions in local traffic associated with the industry downturn.

Air quality and operational noise assessments for the Project are progressing, and it is anticipated an update on noise and air quality modelling for the Project will be presented in the next community factsheet.

Flora and fauna surveys are currently being conducted on some potential biodiversity offset areas on Peabody-owned land.



Aboriginal Cultural Heritage Survey

Consultation

NSW Government Planning Approval Process: State Significant Development

Applicant lodges application for Site Verification Certificate with Department of Planning & Environment (DP&E)

DP&E issues Site Verification Certificate

Applicant requests Secretary's Environmental Assessment Requirements (SEARS, formerly DGRs)

Applicant lodges Referral under Commonwealth *Environment Protection and Biodiversity Conservation Act, 1999*

Commonwealth Minister decides if the Project is a "controlled action"

STEP 1

Preparation of Environmental Impact Statement

DP&E prepares and issues SEARS and places them on DP&E website

Applicant consults with the community, Council and Agencies and prepares Environmental Impact Statement (EIS)

Applicant lodges Development Application and EIS. DP&E determines whether the Development Application meets the requirements and is OK to exhibit

STEP 2

Exhibition and Consultation

Department exhibits Development Application and EIS and seeks submissions from the community, Council and Agencies

Applicant lodges response to submissions

STEP 3

Assessment and Determination

DP&E finalises assessment and consults with Council and Agencies on draft conditions of consent

Determining authority (DP&E or Planning Assessment Commission) makes determination

DP&E issues notice of determination

How can I get involved?

Wilpinjong is committed to consulting with community and government stakeholders to better understand potential project issues and to explain the assessed project impacts.

Local community members will have opportunities to provide input into the Project EIS during:

- Continued monthly local community drop-in sessions at the Wollar General Store
- The EIS public exhibition period.

Peabody will continue to keep the community informed about the Project and additional opportunities for input into the process as the EIS proceeds via subsequent factsheets.



To register your interest for future information:

Phone: 1300 606 625

Email: iflood@peabodyenergy.com

Visit: Wollar General Store between 1.30-4.30pm on first Thursday of the month

www.peabodyenergy.com

Wilpinjong Coal Community Factsheet

September 2015, Issue 3



Extension Project

Wilpinjong Coal Mine is located in the developing western coalfields of NSW and produces high quality thermal coal for domestic and export markets.

Peabody Energy is seeking planning approval for an extension of the life of the Wilpinjong Coal Mine, within its existing Mining Lease and Exploration Licence tenements. If approved, the Wilpinjong Extension Project (the Project) would involve approximately 800 hectares of open-cut extensions, including development of a new open-cut pit in Slate Gully.

The Project will be subject to a rigorous assessment of potential environmental impacts via a full Environmental Impact Statement (EIS). As part of this process, Peabody will be required to demonstrate to the NSW Government that it can manage or mitigate impacts to the Government's satisfaction, before the Project can be approved.

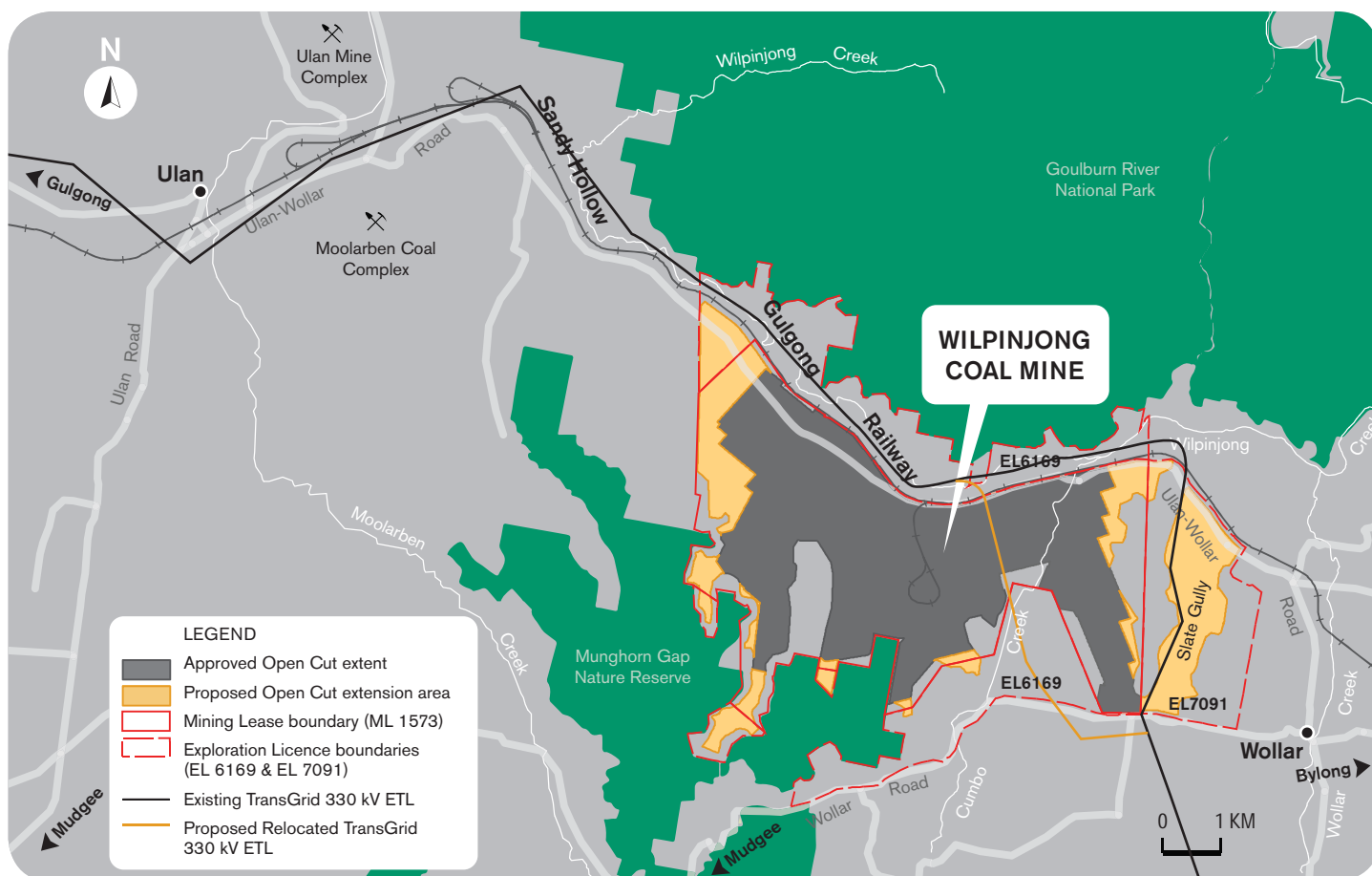
More detail about the Project is available:

- On Wilpinjong's website – (*See, Community Factsheets Issues 1 & 2*)
- On NSW Department of Planning & Environment's website (Major Projects Assessments page)
- By contacting us (*See, page 4 of this fact sheet*).

Peabody is committed to keeping the community up-to-date about Wilpinjong's operations and encourages community participation in the EIS process.

Wilpinjong Coal Mine is a significant contributor to the local economy and an important asset to the people of NSW. The mine provides low-cost domestic coal to AGL (formerly Macquarie Generation) which accounts for approximately 7-10 % of NSW electricity production, securing the energy needs of thousands of NSW residents.

Extension Project



PROJECT UPDATE

EIS studies including studies into noise, air quality, surface water and groundwater, biodiversity, cultural heritage, social and community infrastructure are being finalised. Some key updates about operational noise and air quality are outlined in this factsheet.

Approval Process Summary

- EIS studies are being finalised with EIS submission anticipated late-2015.
- The Project's Secretary's Environmental Assessment Requirements (SEARs) were received in Dec. 2014. These provide an overview of the studies Wilpinjong must address as part of the Project's EIS. To view the SEARs go to: http://majorprojects.planning.nsw.gov.au/index.pl?action=view_job&job_id=6764
- A Site Verification Certificate confirmed no 'Biophysical Strategic Agricultural Land' exists within the Project area.
- The Project was referred to the Federal Government under the *EPBC Act* and was deemed a 'Controlled Action' in March 2015. This means the Project will undergo assessment under the *EPBC Act* via the bilateral agreement with the NSW government.

OPERATIONAL NOISE

Development of an open cut in Slate Gully would reduce the distance from the mine to Wollar Village. As a result there would be increased audibility of operational noise.

The current project-specific noise limit in Wollar Village is 35 decibels under the NSW Industrial Noise Policy.

Given the potential increase in operational noise as a result of the Project, Wilpinjong has identified a range of controls to address noise levels at private residences in Wollar Village.

With these controls in place, the maximum proposed Project noise levels at private residences in Wollar Village are predicted to be up to 37 decibels. This increase is considered negligible as, according to NSW Government policy, the average listener would not be able to discern an increase in noise of 2 decibels.

Project noise levels in Wollar Village are therefore predicted to be below voluntary land acquisition trigger levels.

In the Mogo Road area, 38 decibel noise levels are predicted at one other private rural residence.

Wilpinjong Coal would meet Project Development Consent noise criteria at the nearest private residences and maintain compliance by implementing monitoring and control measures outlined in the existing Noise Management Plan.

Wilpinjong is committed to working with these nearest landowners towards mutually-agreeable long term options for co-existence.

BLASTING

With the development of Slate Gully, blasting activities would also be closer to Wollar Village. EIS blast modelling shows blasts would comply with the relevant criteria (blast vibration and overpressure) in Wollar Village and at the closest private rural residences. Blasting for the Project would continue to be managed in accordance with the Blast Management Plan. This plan details how blasts are conducted at Wilpinjong, including monitoring and management processes that must be in place.

AIR QUALITY

With the development of Slate Gully, dust sources associated with the Project would be closer to Wollar Village. EIS studies show, that with the continued application of the Air Quality Management Plan real-time monitoring and response measures, operations can be managed to meet air quality criteria at private residences.

TRAFFIC

The Project would result in minimal additional road traffic impacts compared to the existing mine, and no additional management or mitigation measures are required on the general road network (Ulan Road is already being upgraded through the Ulan Road Strategy).

As a component of the Project, the remaining un-sealed section of Ulan-Wollar Road would be realigned and sealed.

WATER

New groundwater and surface water balance models have been developed for the Project.

Water extraction would continue generally in accordance with Wilpinjong Coal's existing water licence limits.

BIODIVERSITY

Further flora and fauna surveys are currently being conducted on some Peabody-owned land. The purpose of these surveys is to examine their potential to use as biodiversity offsets.

Wilpinjong Control Room Monitoring



Consultation

NSW Government Planning Approval Process: State Significant Development

STEP 1

Preparation of EIS
(approx 12 months)

Peabody undertakes preliminary project work and requests Environmental Assessment Requirements from NSW Government

COMPANY

Peabody consults with the community, Council and Government Agencies and prepares Environmental Impact Statement (EIS)

Peabody lodges Development Application (DA) and EIS

STEP 2

Exhibition and Consultation

COMMUNITY

GOVERNMENT

COMPANY

Public exhibition period and input (submissions) from community, Council and government agencies

Peabody reviews and responds to submissions

STEP 3



Assessment and Determination

COMMUNITY

GOVERNMENT

Government (DP&E) develops assessment including draft conditions

Planning Assessment Commission conducts public hearing and makes determination

 Complete stage  Current stage  Remaining stage

For more information on the NSW Government approvals process visit <http://www.planning.nsw.gov.au/>

Meet the expert at our 'Drop in' Session

Authors of Wilpinjong Extension Project key specialist studies will be on hand to meet with members of the community and answer questions.

When: 28 September
12.30pm – 4.30pm

Where: Wollar Store

Register: With Kim Peach
at the Wollar Store

How can I get involved?

Wilpinjong is committed to consulting with community and government stakeholders to better understand potential project issues and to explain the assessed project impacts.

Local community members will have opportunities to provide input into the Project EIS during:

- Continued monthly local community drop-in sessions at the Wollar General Store
- The EIS public exhibition period, anticipated late-2015 or early-2016, depending on further consultation with the Department of Planning & Environment.

Peabody will continue to keep the community informed about the Project and additional opportunities for input into the process via subsequent factsheets.



To register your interest for future information:

Phone: 1300 606 625

Email: iflood@peabodyenergy.com

Visit: Wollar General Store between 1.30-4.30pm on first Thursday of the month

www.peabodyenergy.com