



# ATTACHMENT 2 COMMUNITY INFORMATION





The Wilpinjong Coal Mine is located in the developing western coalfields of NSW and produces a high quality thermal coal for domestic and export markets.

Approval for Wilpinjong was granted in February 2006 and first coal was railed from the site in October the same year. Peabody purchased the mine in the fourth quarter 2006.

Wilpinjong Coal is a significant contributor to NSW power supply through the provision of domestic coal to Macquarie Generation. This contribution accounts for approximately 7 – 10% of NSW energy consumption.

Wilpinjong is currently seeking modification of its project approval for minor incremental extension of the mine within its existing Mining Lease. In addition to the modification, exploration activities continue within the adjoining Exploration Licence areas to further refine the geological model to assist in understanding future opportunities. This modification is being referred as 'Mod 5' although the Department of Planning and Infrastructure ultimately assign the modification name.

This information sheet has been developed to provide the community with a general overview of the modification proposal, an outline of the NSW government's planning approvals process that we are required to follow, and how the community can be involved in the process.



## The Proposal

The modification includes minor incremental extension to a number of existing mining pits which will allow Wilpinjong Mine to maximise production and plan for the extraction of additional coal reserves identified in the Mining Lease.

Wilpinjong Coal is committed to best practice in community relations and rehabilitation throughout the local and wider Mudgee region.

Wilpinjong owns significant buffer land outside its mining tenements. Where relevant this land has been acquired to manage mining impacts on the local landholders. Wilpinjong will continue to work with local landholders to support farming and grazing activities.

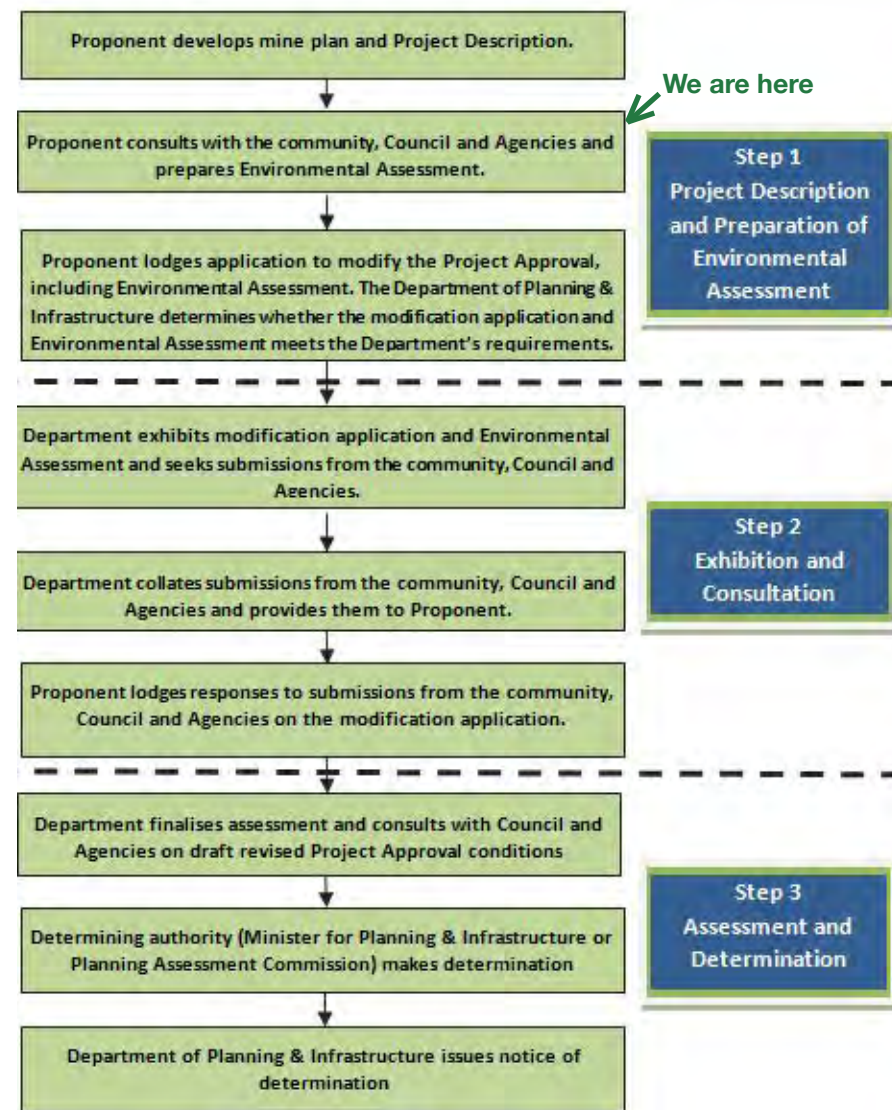
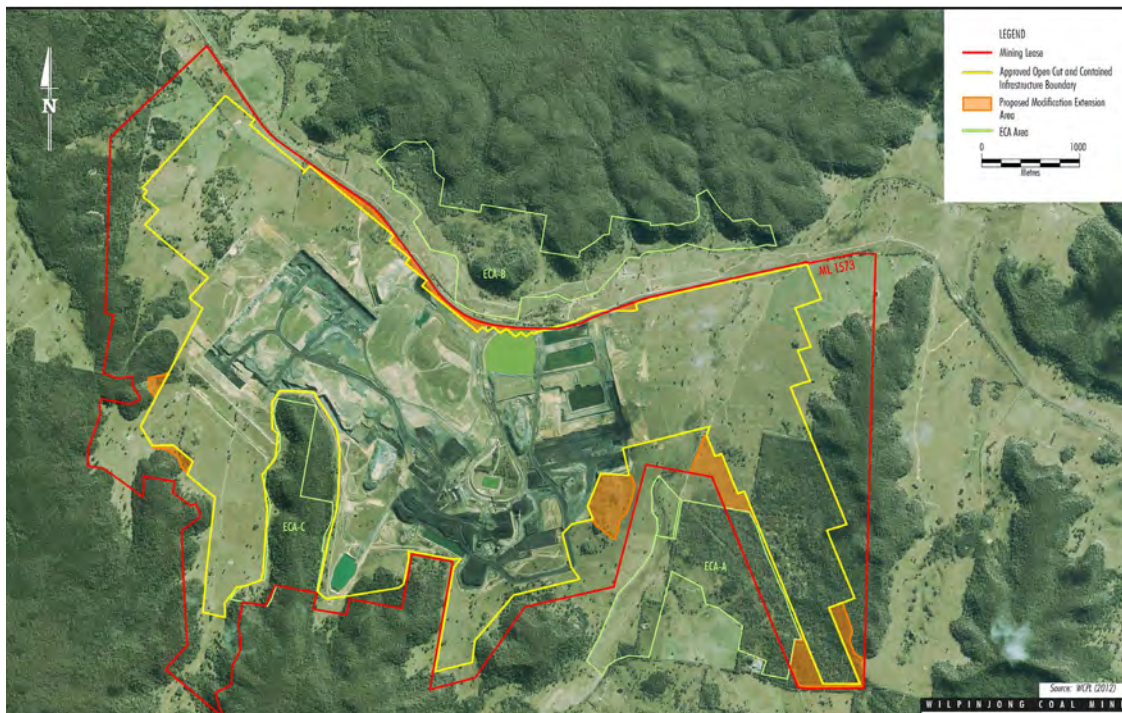
Wilpinjong Coal aims to lodge the Environmental Assessment for the modification in the third quarter of 2013.

## The Planning Process

Planning approval for the modification will be sought from the NSW Minister for Planning and Infrastructure (through the Department of Planning and Infrastructure) under the Environmental Planning and Assessment Act 1979. The approval process requires that a detailed Environmental Assessment (EA) be prepared, which will be undertaken.

The Environmental Assessment process is likely to take approximately eight months to complete. The planning approval process diagram provides a summary of the key steps involved in the process. Community involvement will be a key element of the process.

Once lodged with the Department of Planning and Infrastructure, the EA will be placed on public exhibition. During this period the community will be able to make submissions to the Department of Planning and Infrastructure on the project, which will then be considered by government.



## How can I be involved?

The best way to get involved is through the community consultation program which will be undertaken as part of the project approval process.

Members of the Wilpinjong team will be available on a regular basis at the Wollar General Store to answer any questions.

If you would like to register your interest or would like further information please feel free to contact:

**Jamie Lees**  
**Manager Project Development & Approvals**  
**Wilpinjong Coal Pty Ltd**  
**P: +61 (0)2 6370 2528**  
**M: +61 (0)4 28619577**





The Wilpinjong Coal Mine is located in the developing western coalfields of NSW and produces high quality thermal coal for domestic and export markets.

Approval for Wilpinjong was granted in February 2006 and first coal was railed from the site in October the same year. Peabody purchased the mine in the fourth quarter of 2006.

Wilpinjong Coal is a significant contributor to NSW power. Wilpinjong's domestic coal is provided to Macquarie Generation and used to generate approximately 7-10% of our State's energy supply.

The mine has an existing operational workforce of approximately 550, including contractors, and supports the local economy – investing \$3.40 million with local suppliers in 2012.

Peabody Energy is currently seeking modification of its project approval for Wilpinjong to undertake some

minor incremental extensions to the mine within its existing mining lease. It is also seeking approval for supplementary amendments to the approved operations.

This modification is being referred as 'Mod 5' although the Department of Planning and Infrastructure will ultimately assign the modification name.

In addition to 'Mod 5', exploration activities continue at Wilpinjong within the adjoining exploration licence areas adjacent to the existing mining lease.

Peabody is committed to keeping the community up-to-date about Wilpinjong operations. This fact sheet provides information on:

- The 'Mod 5' proposal
- Economic benefits
- Environmental assessment
- NSW Government planning approval process
- How to find out more and get involved.



\_\_\_\_\_

The modification would not involve changes to:

- More detail about 'Mod 5' will be included in the Environmental Assessment, which will be lodged with the Department of Planning and Infrastructure in August 2013 (See Page 4 of this fact sheet).

More detail about 'Mod 5' will be included in the Environmental Assessment, which will be lodged with the Department of Planning and Infrastructure in August 2013 (See Page 4 of this fact sheet).

- More detail about 'Mod 5' will be included in the Environmental Assessment, which will be lodged with the Department of Planning and Infrastructure in August 2013 (See Page 4 of this fact sheet).

# Economic Benefits

Results indicate the modification would have a net benefit of approximately \$28 million (above the benefits of the existing mine).

Results indicate the modification would have a net benefit of approximately \$28 million (above the benefits of the existing mine).

# Environmental Assessment

## Operational Noise

A noise study has been undertaken by SLR Consulting as part of the environmental assessment process for the proposal. A noise model was developed to predict how much noise would be generated by Wilpinjong Coal Mine, incorporating 'Mod 5', during adverse weather conditions — including strong temperature inversions.

The existing mine is separated from the village of Wollar by topographic ridges and is approved to operate within approximately 3km of the village. The 'Mod 5' noise model looked at likely noise impacts of on residents in Wollar, and on rural residences outside Wollar.

The results identified there are four private dwellings located outside of Wollar where operational noise levels from the mine incorporating 'Mod 5' would be 1-3 dB above relevant noise limits (under some adverse weather conditions at night.) Wilpinjong is working with these landholders regarding potential management options.

Wilpinjong has committed to continue to meet current Project Approval noise limits at private dwellings in Wollar and will continue to use real-time noise monitoring and operational controls to maintain compliance.

## Surface water

A surface water study has been undertaken by Gilbert & Associates as part of the environmental assessment process for the proposal.

The study identified:

- Catchment area changes associated with 'Mod 5' would be negligible
- The proposed upgrade to the handling of tailings from the coal processing plant would improve water supply reliability and the frequency of approved water discharges.

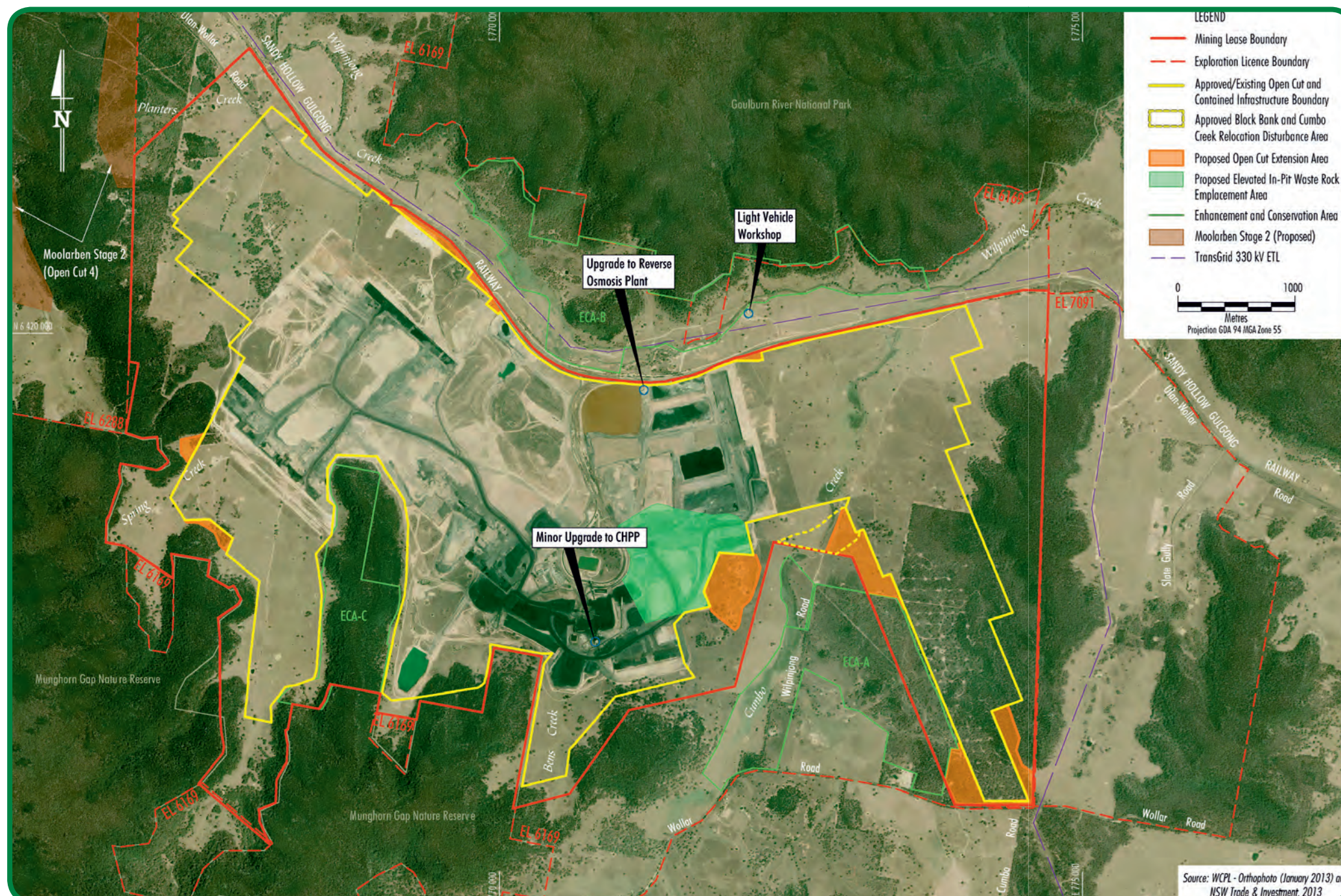
## Groundwater

A study has been undertaken by HydroSimulations as part of the environmental assessment process for the proposal.

The ground water study identified 'Mod 5' would result in:

- Negligible impacts on pit inflows (water entering the pit)
- No discernable additional impacts on Wilpinjong Creek stream baseflow
- No measurable effect at any private bores
- No other additional groundwater quality impacts.

Peabody is also currently expanding Wilpinjong's groundwater monitoring network to support ongoing groundwater management. This expanded network will be used throughout the life of the mine to verify modelling results.





# Environmental Assessment

## Dust

An air quality study has been undertaken by Todoroski Air Sciences as part of the environmental assessment process for the proposal.

The study predicts there would be no exceedances of air quality criteria at nearby private dwellings as a result of 'Mod 5'.

Peabody will continue to use real-time air quality monitoring and dust controls as part of Wilpinjong's standard operational processes.

## Spontaneous Combustion Ecology

'Mod 5' would not significantly alter the potential for spontaneous combustion events at Wilpinjong, as mining would continue in the same rock types.

A remediation strategy which will help manage existing spontaneous combustion events involves the placing of carbonaceous waste rock materials (with higher potential for spontaneous combustion) into existing Wilpinjong mine voids and covering it with inert material.

- 'Mod 5' would involve clearing of native vegetation, approximately:
- 30 ha of woodland (previously selectively logged and grazed)
  - 22 ha of grassland (i.e. previous farmland).

Peabody has developed a biodiversity offset strategy for 'Mod 5' that would see approximately 211 hectares of native vegetation (including 193 hectares of woodland and 18 hectares of derived grassland/shrubland) adjacent to the Goulburn River National Park set aside in perpetuity to offset the ecological impacts.

Peabody intends for this 211 hectares of land to be added to the Goulburn River National Park for its long-term conservation.

## NSW Government Planning Approval Process

<b>Step One</b> Project description and preparation of Environmental Assessment  <b>WE ARE HERE</b>	Proponent develops mine plan and project description
	Proponent consults with the community, Council and agencies and prepares Environmental Assessment (EA).
	Proponent lodges application to modify the Project Approval, including EA. The Department of Planning and Infrastructure (DP&I) determines whether the modification application and EA meets the Department's requirements.
<b>Step Two</b> Exhibition and consultation	Department exhibits modification application and EA and seeks submissions from the community, Council and agencies.
	Department collates submissions from the community, Council and agencies and provides them to proponent.
	Proponent lodges responses to submissions from the community, Council and agencies on the modification application.
<b>Step Three</b> Assessment and determination	Department finalises assessment and consults with Council and agencies on draft revised project approval conditions.
	Minister for Planning and Infrastructure or Planning Assessment Commission makes determination.
	DP&I issues notice of determination.

## How can I get involved?

Peabody is undertaking a community consultation program for 'Mod 5' which will continue through the public exhibition and assessment process.

Once lodged with the Department of Planning and Infrastructure, the 'Mod 5' Environmental Assessment will be placed on public exhibition.

Members of the Wilpinjong team will continue to be available between 1.30pm and 4.30pm on the first Thursday of each month at the Wollar General Store to answer any questions you may have about 'Mod 5' or our operations.

To register your interest or for further information please contact:

**Jamie Lees**  
Manager Project Development & Approvals  
Wilpinjong Coal Pty Ltd  
P: +61 (0)2 6370 2528  
M: +61 (0)428 619 577  
jlees@peabodyenergy.com