

Wilpinjong Coal Community Factsheet

December 2014, Issue 1



Extension Project

Wilpinjong Coal Mine is located in the developing western coalfields of NSW and produces high quality thermal coal for domestic and export markets.

Approval for Wilpinjong Coal Mine was granted in February 2006 and first coal was railed from the site in October the same year. Peabody Energy purchased the mine in the fourth quarter of 2006.

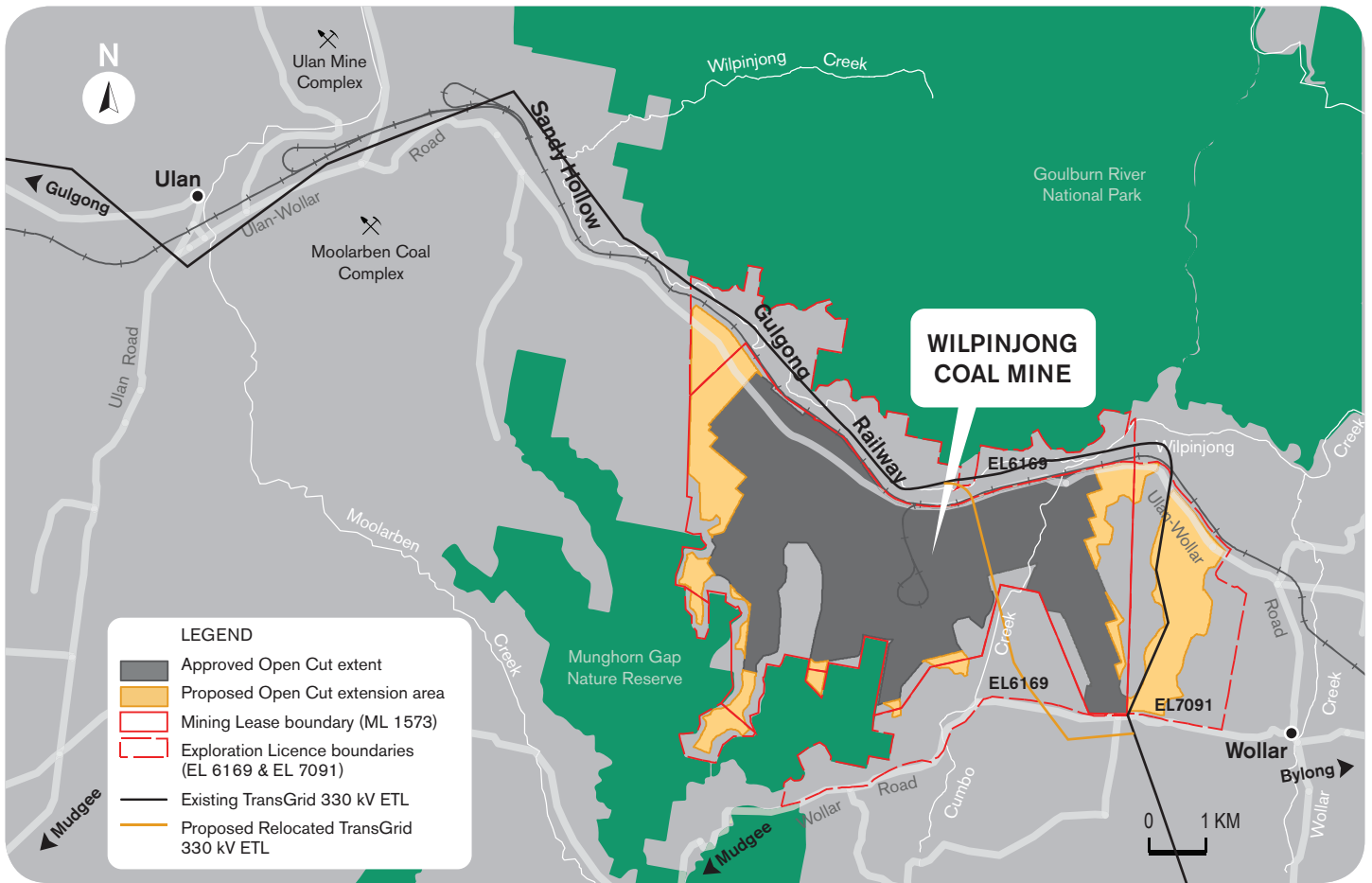
Peabody Energy has commenced the process of seeking planning approval for an extension of the life of the Wilpinjong Coal Mine, within its existing Mining Lease and Exploration License tenements.

The Wilpinjong Extension Project (the Project) will be the subject of a full Environmental Impact Statement (EIS) and if approved, would involve approximately 800 hectares of open-cut extensions, including development of a new open cut pit in Slate Gully.

Peabody is committed to keeping the community up-to-date about Wilpinjong's operations and welcomes community participation in the EIS process.

Wilpinjong Coal Mine is a significant contributor to the local economy and an important asset to the people of NSW. The mine provides low-cost domestic coal to AGL (formerly Macquarie Generation) which accounts for approximately 7-10 % of NSW energy consumption, securing the energy needs of thousands of NSW residents.

Extension Project



The Proposal

The proposed mine extension would support an additional operating life of seven years.

The Project would continue to use the existing mine coal handling and processing infrastructure, including the rail load out facility. The main components of the Project would include:

- Extension to the mine life, from 2026 to 2033
- A continued production rate of 16 million tonnes per annum (Mtpa) of run-of-mine (ROM) coal
- A production rate of 13Mtpa of saleable coal
- Approximately 800 hectares of open cut extensions including:
 - 500 hectares of incremental extensions to the existing open cut pits in areas of Mining Lease 1573 and Exploration Licence 6169
 - A new open cut pit of 300 hectares in Exploration Licence 7091 (Slate Gully)
- Augmentation of site mobile fleet (extra excavator, haul trucks and ancillary equipment)

- A construction workforce of up to approximately 100
- A peak operational workforce of approximately 625

The project would also involve:

- Additional supporting infrastructure such as haul roads, up-catchment diversions, access tracks, and general mining and water management infrastructure
- Relocation of a section of the Wollar to Wellington 330 kilovolt electricity transmission line to allow mining in Slate Gully and relocation of sections of the Ulan-Wollar Road

If approved, the Project would provide job security for the mine's approved 500-strong workforce and continued delivery of the positive social and economic contributions of the mine to local communities and the broader region.



Environmental Impact Statement

Wilpinjong is undertaking a rigorous assessment of potential environmental impacts of the Project as part of the EIS, in line with NSW Government requirements. As part of this process, Peabody will be required to demonstrate to the NSW Government that it can manage or mitigate impacts to the Government's satisfaction, before the Project can be approved.

Peabody Energy is proceeding with a range of specialist environmental assessments for the EIS that include

evaluation of potential Project impacts on operational noise, blasting, air quality, water resources, heritage and ecology.

Social Impact Assessment

A Social Impact Assessment will also be undertaken to identify the Project's potential impacts and benefits in relation to community values and social conditions in local and regional communities. Further information on the specialist studies, including the results of key studies will be available at later stages of the EIS process.



Extension Project

NSW Government Planning Approval Process: State Significant Development

STEP 1

Preparation of EIS
(approx 12 months)

Peabody undertakes preliminary project work and requests Environmental Assessment Requirements from NSW Government
(These will be posted on DP&E website)

COMPANY

Peabody consults with the community, Council and Agencies and prepares Environmental Impact Statement (EIS)

Peabody lodges Development Application (DA) and EIS

STEP 2

Exhibition and Consultation

Public exhibition period and input (submissions) from community, Council and government agencies

COMMUNITY

GOVERNMENT

COMPANY

Peabody reviews and responds to submissions

STEP 3

Assessment and Determination

Government (DP&E) develops assessment including draft conditions

COMMUNITY

GOVERNMENT

Planning Assessment Commission conducts public hearing and makes determination

Complete stages

Remaining stages

For more information on the NSW Government approvals process visit
<http://www.planning.nsw.gov.au/>

How can I get involved?

Local community members will have opportunities to provide input into the EIS for the Project during:

- The Social Impact Assessment
- Continued monthly local community drop-in sessions at the Wollar General Store
- The EIS public exhibition period

Peabody will continue to keep the community informed about the Project and additional opportunities for input into the process as the EIS proceeds via subsequent newsletters.

Peabody
ENERGY

To register your interest for future information:

Phone: 1300 606 625

Email: jlees@peabodyenergy.com

Visit: Wollar General Store between 1.30-4.30pm on first Thursday of the month

www.peabodyenergy.com