

Wilpinjong Coal

Community Factsheet

September 2015, Issue 3



Extension Project

Wilpinjong Coal Mine is located in the developing western coalfields of NSW and produces high quality thermal coal for domestic and export markets.

Peabody Energy is seeking planning approval for an extension of the life of the Wilpinjong Coal Mine, within its existing Mining Lease and Exploration Licence tenements. If approved, the Wilpinjong Extension Project (the Project) would involve approximately 800 hectares of open-cut extensions, including development of a new open-cut pit in Slate Gully.

The Project will be subject to a rigorous assessment of potential environmental impacts via a full Environmental Impact Statement (EIS). As part of this process, Peabody will be required to demonstrate to the NSW Government that it can manage or mitigate impacts to the Government's satisfaction, before the Project can be approved.

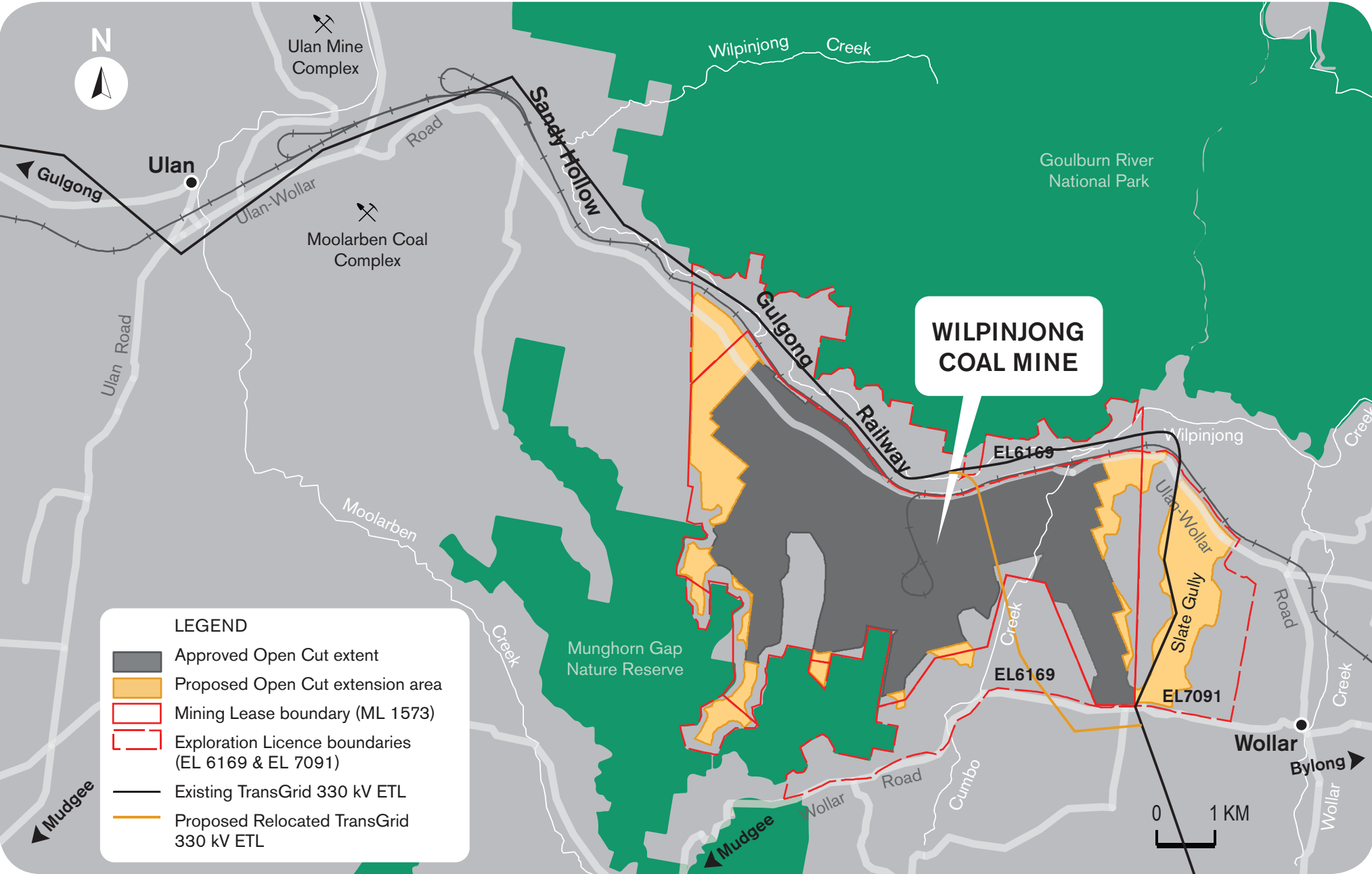
More detail about the Project is available:

- On Wilpinjong's website – (See, *Community Factsheets Issues 1 & 2*)
- On NSW Department of Planning & Environment's website (Major Projects Assessments page)
- By contacting us (See, *page 4 of this fact sheet*).

Peabody is committed to keeping the community up-to-date about Wilpinjong's operations and encourages community participation in the EIS process.

Wilpinjong Coal Mine is a significant contributor to the local economy and an important asset to the people of NSW. The mine provides low-cost domestic coal to AGL (formerly Macquarie Generation) which accounts for approximately 7-10 % of NSW electricity production, securing the energy needs of thousands of NSW residents.

Extension Project



PROJECT UPDATE

EIS studies including studies into noise, air quality, surface water and groundwater, biodiversity, cultural heritage, social and community infrastructure are being finalised. Some key updates about operational noise and air quality are outlined in this factsheet.

Approval Process Summary

- EIS studies are being finalised with EIS submission anticipated late-2015.
- The Project's Secretary's Environmental Assessment Requirements (SEARs) were received in Dec. 2014. These provide an overview of the studies Wilpinjong must address as part of the Project's EIS. To view the SEARs go to: http://majorprojects.planning.nsw.gov.au/index.pl?action=view_job&job_id=6764
- A Site Verification Certificate confirmed no 'Biophysical Strategic Agricultural Land' exists within the Project area.
- The Project was referred to the Federal Government under the *EPBC Act* and was deemed a 'Controlled Action' in March 2015. This means the Project will undergo assessment under the *EPBC Act* via the bilateral agreement with the NSW government.

OPERATIONAL NOISE

Development of an open cut in Slate Gully would reduce the distance from the mine to Wollar Village. As a result there would be increased audibility of operational noise.

The current project-specific noise limit in Wollar Village is 35 decibels under the NSW Industrial Noise Policy.

Given the potential increase in operational noise as a result of the Project, Wilpinjong has identified a range of controls to address noise levels at private residences in Wollar Village.

With these controls in place, the maximum proposed Project noise levels at private residences in Wollar Village are predicted to be up to 37 decibels. This increase is considered negligible as, according to NSW Government policy, the average listener would not be able to discern an increase in noise of 2 decibels.

Project noise levels in Wollar Village are therefore predicted to be below voluntary land acquisition trigger levels.

In the Mogo Road area, 38 decibel noise levels are predicted at one other private rural residence.

Wilpinjong Coal would meet Project Development Consent noise criteria at the nearest private residences and maintain compliance by implementing monitoring and control measures outlined in the existing Noise Management Plan.

Wilpinjong is committed to working with these nearest landowners towards mutually-agreeable long term options for co-existence.

BLASTING

With the development of Slate Gully, blasting activities would also be closer to Wollar Village. EIS blast modelling shows blasts would comply with the relevant criteria (blast vibration and overpressure) in Wollar Village and at the closest private rural residences. Blasting for the Project would continue to be managed in accordance with the Blast Management Plan. This plan details how blasts are conducted at Wilpinjong, including monitoring and management processes that must be in place.

AIR QUALITY

With the development of Slate Gully, dust sources associated with the Project would be closer to Wollar Village. EIS studies show, that with the continued application of the Air Quality Management Plan real-time monitoring and response measures, operations can be managed to meet air quality criteria at private residences.

TRAFFIC

The Project would result in minimal additional road traffic impacts compared to the existing mine, and no additional management or mitigation measures are required on the general road network (Ulan Road is already being upgraded through the Ulan Road Strategy).

As a component of the Project, the remaining un-sealed section of Ulan-Wollar Road would be realigned and sealed.

WATER

New groundwater and surface water balance models have been developed for the Project.

Water extraction would continue generally in accordance with Wilpinjong Coal's existing water licence limits.

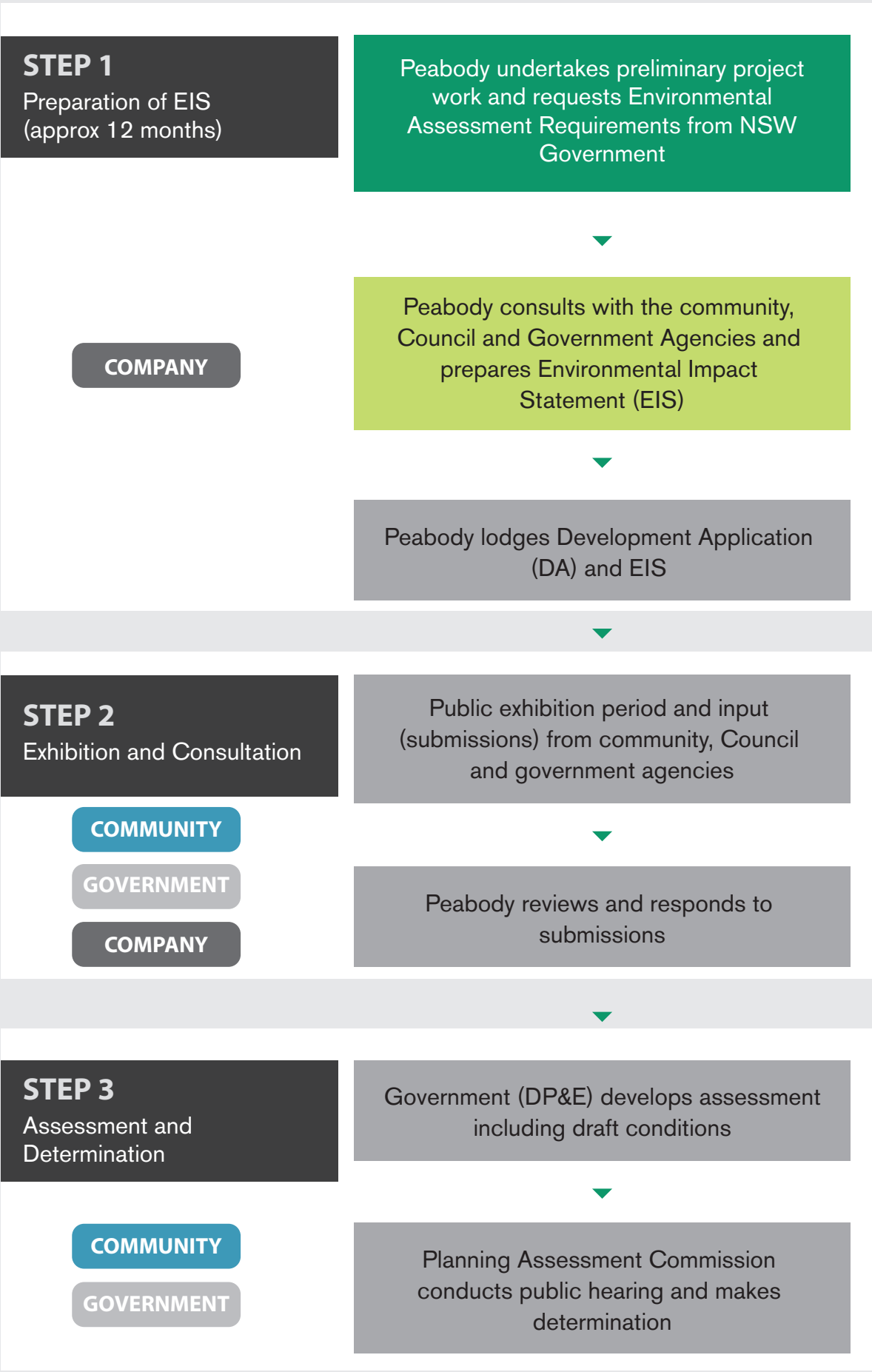
BIODIVERSITY

Further flora and fauna surveys are currently being conducted on some Peabody-owned land. The purpose of these surveys is to examine their potential to use as biodiversity offsets.

Wilpinjong Control Room Monitoring



NSW Government Planning Approval Process: State Significant Development



Complete stage Current stage Remaining stage

For more information on the NSW Government approvals process visit <http://www.planning.nsw.gov.au/>

Meet the expert at our ‘Drop in’ Session

Authors of Wilpinjong Extension Project key specialist studies will be on hand to meet with members of the community and answer questions.

When: 28 September
12.30pm – 4.30pm

Where: Wollar Store

Register: With Kim Peach at the Wollar Store

How can I get involved?

Wilpinjong is committed to consulting with community and government stakeholders to better understand potential project issues and to explain the assessed project impacts.

Local community members will have opportunities to provide input into the Project EIS during:

- Continued monthly local community drop-in sessions at the Wollar General Store
- The EIS public exhibition period, anticipated late-2015 or early-2016, depending on further consultation with the Department of Planning & Environment.

Peabody will continue to keep the community informed about the Project and additional opportunities for input into the process via subsequent factsheets.