



WILPINJONG COAL PTY LTD

Environment Protection Licence (EPL) 12425

[Link to Environment Protection Licence EPL12425](#)

**LICENCE MONITORING DATA
MONTHLY SUMMARY REPORT**

for

1 September 2015 to 30 September 2015

Air Monitoring

Air quality surrounding the Wilpinjong Coal Mine is monitored using:

1. tapered element oscillating microbalances (TEOM);
2. high volume air samplers (HV); and
3. dust deposition gauges (DG).

In terms of the above equipment:

1. the TEOM and HVAS measure fine dust particles up to 10 microns in diameter (i.e. PM10); and
2. the DG measure the total dust deposited in the gauge during the sample period.

All are influenced by mining as well as non mining activities in the local area.

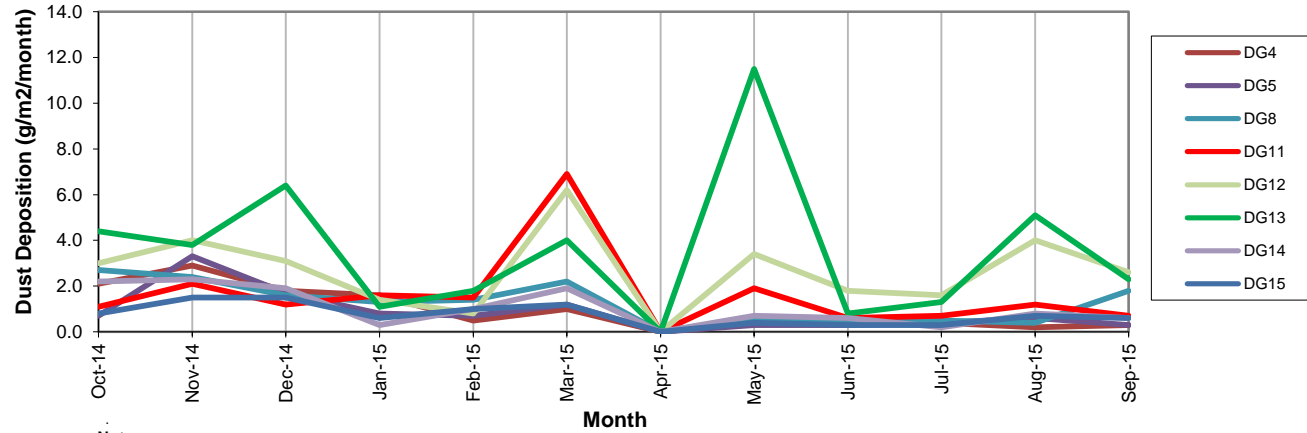
The location of the above monitoring equipment in relation to Wilpinjong Coal Mine is shown in Figure 8.

A summary of the monitoring results for the month is provided in Table 1 and the yearly trends are also shown in Figures 1 to 3.

Table 1

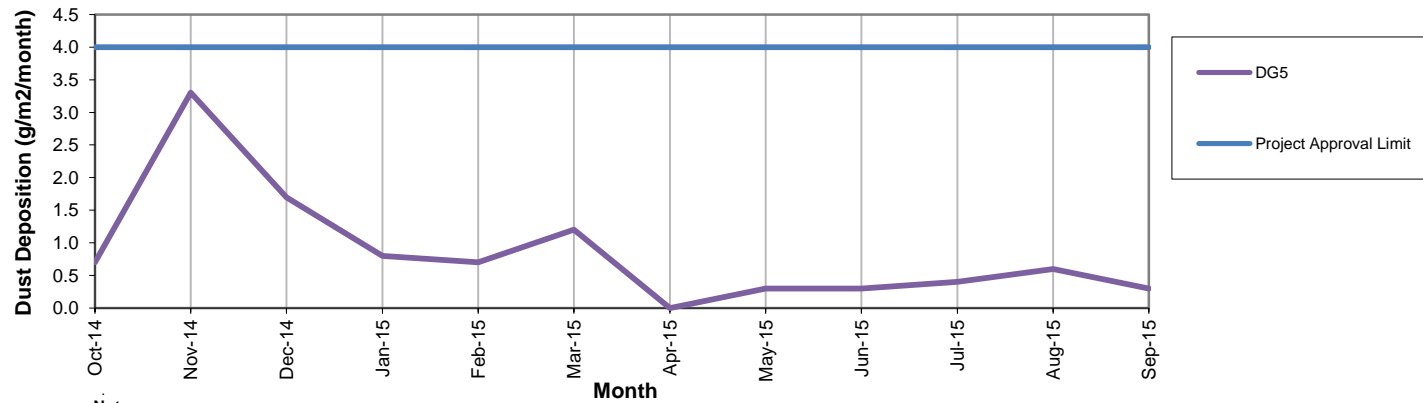
EPL ID No.	Monitoring Point ID.	Pollutant	Unit of Measure	Monitoring Frequency required by EPL	No. of times measured during month	Min. Value	Max. Value	Mean Value	Measurement	Annual Average	Limit	Exceed ⁿ (yes/no)	Date Last Sampled	Date Reported
3	DG4	Particulates - TSM	grams per square metre per month	Monthly	1				0.3				28/09/15	13/10/15
4	DG5	Particulates - TSM	grams per square metre per month	Monthly	1				0.3	0.9	4.0	No	28/09/15	13/10/15
6	DG8	Particulates - TSM	grams per square metre per month	Monthly	1				1.8				28/09/15	13/10/15
9	DG11	Particulates - TSM	grams per square metre per month	Monthly	1				0.7				28/09/15	13/10/15
10	DG12	Particulates - TSM	grams per square metre per month	Special Frequency 1	1				2.6				28/09/15	13/10/15
11	DG13	Particulates - TSM	grams per square metre per month	Special Frequency 1	1				2.3				28/09/15	13/10/15
12	DG14	Particulates - TSM	grams per square metre per month	Special Frequency 1	1				0.6				28/09/15	13/10/15
17	DG15	Particulates - TSM	grams per square metre per month	Monthly	1				0.6				28/09/15	13/10/15
13	HV1	PM10	micrograms per cubic metre	Every 6 days	4	3.7	6.2	4.8					26/09/15	14/10/15
19	HV4	PM10	micrograms per cubic metre	Every 6 days	5	3.9	14.2	7.4					26/09/15	14/10/15
20	HV5	PM10	micrograms per cubic metre	Every 6 days	5	4.8	14.2	8.0					26/09/15	14/10/15
22	TEOM3	PM10	micrograms per cubic metre	Continuous (24 Hr Average)	93.3%	1.6	19.1	9.0						
23	TEOM4	PM10	micrograms per cubic metre	Continuous (24 Hr Average)	100.0%	3.1	26.3	9.0						

Figure 1a. DG Results - 12 Month Trend



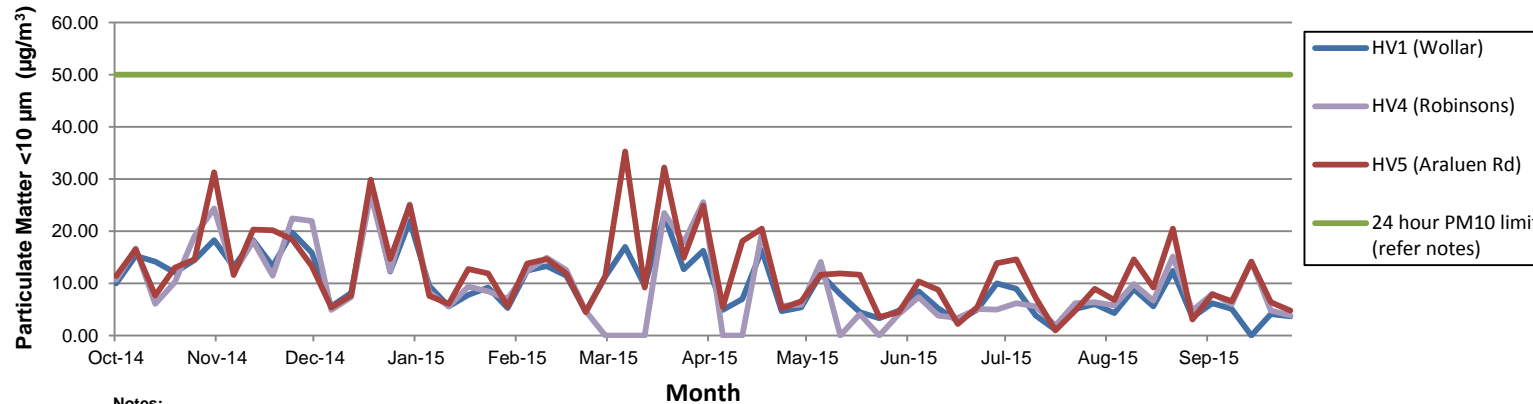
- Notes:**
1. Limit of 4 g/m²/month applies to DG5 (Wollar Village) - refer Figure 1b.
 2. No dust results were recorded in April due to Laboratory error.
 3. DG13 very close to active mining operations.

Figure 1b. DG Results - 12 Month Trend



- Notes:**
1. No dust results were recorded in April due to Laboratory error.
 2. Sheep in same paddock as DG5 in Nov 2014.

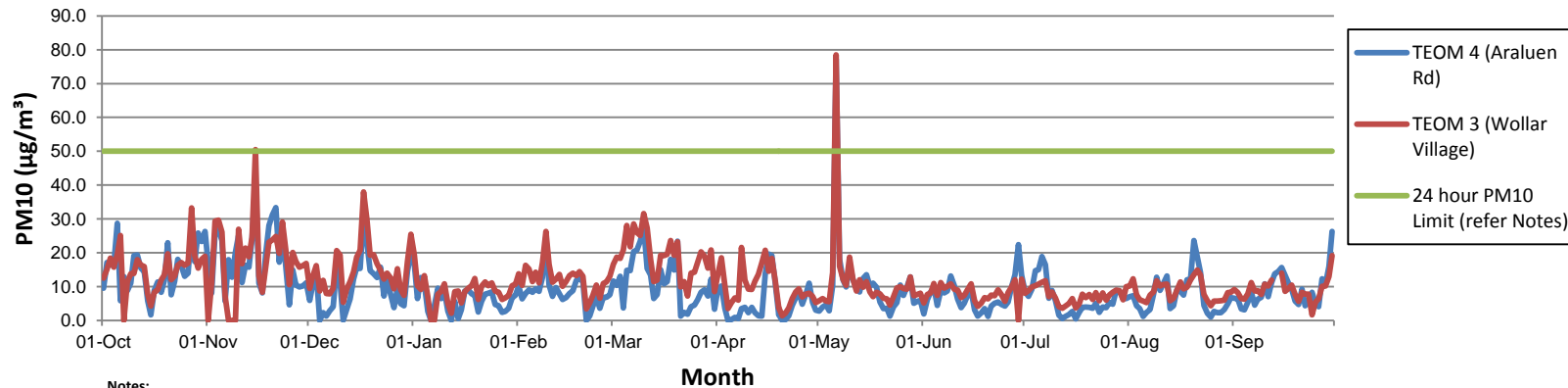
Figure 2. HV (PM10) Results - 12 Month Trend



Notes:

1. Limit doesn't apply for extraordinary events such as bushfires, prescribed burning, or dust storms.
2. A fault occurred with HV4 in Mar, Apr and May so not all samples were not taken - HV4 replaced.
3. A power outage prevented dust sample being collected from HV1 on September 14.
4. HV5 influenced by dust from Araluen Road generally during stable atmospheric conditions (i.e. dry, temperature inversion and no wind).

Figure 3. TEOM (PM10) Results - 12 Month Trend



Notes:

1. Limit doesn't apply for extraordinary events such as bushfires, prescribed burning or dust storms
2. Regional dust storm occurred 6 May also elevated regional dust levels December 17.
3. Bushfire smoke influenced dust levels in November 2014 .
4. Sheep in same paddock as TEOM3 mid to late March.

Surface Water Monitoring

Surface water runoff is isolated and diverted around disturbed areas through the construction of water diversion bunds. Runoff from disturbed areas is diverted into on-site water retention dams.

A Reverse Osmosis (RO) Plant treats all water from the retention dams before it is discharged to Wilpinjong Creek. The EPL specifies limits for the quantity and quality of water that may be discharged from the site.

A summary of the monitoring results for the month is provided in Table 2. The continuous monitoring results for pH, conductivity and volume are also shown in Figures 4 to 6.

Table 2

EPL ID No.	Monitoring Point ID.	Pollutant	Unit of Measure	Monitoring Frequency required by EPL	No. of times measured during month	Min. Value	Max. Value	Mean Value	Measurement	Limit	Exceed ⁿ (yes/no)	Date Last Sampled	Date Last Reported
24	RO Plant Discharge	Conductivity	microSiemens per centimetre (uS/cm)	Continuous during discharge	100%	110.0	311.0	158.0		500	No		
		Oil and Grease	milligrams per litre (mg/L)	Weekly during any discharge	7	<5	<5	<5		10.0	No	25/09/15	15/10/15
		pH	pH Unit	Continuous during discharge	100%	6.7	8.2	7.1		≥6.5≤8.5	No		
		Total Suspended Solids	milligrams per litre (mg/L)	Weekly during any discharge	7	<1	<1	<1		50	No	25/09/15	15/10/15
		Volume discharged	megalitres per day	Continuous during discharge	100%	0.00	1.65	0.96		5.0	No		

Figure 4 – Volume discharged per day (ML)

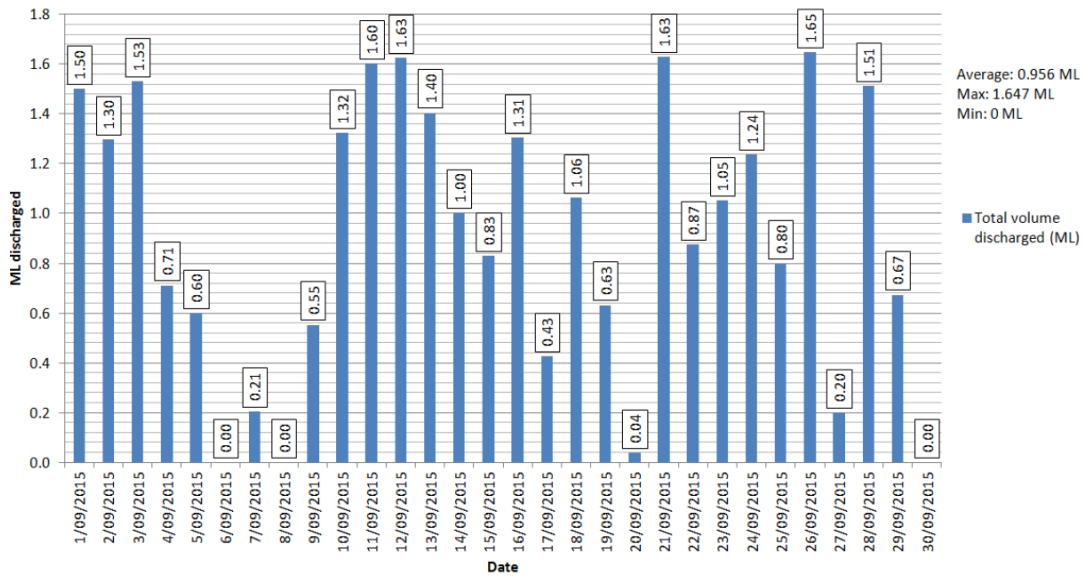


Figure 5 – Conductivity (max, min & average / day)

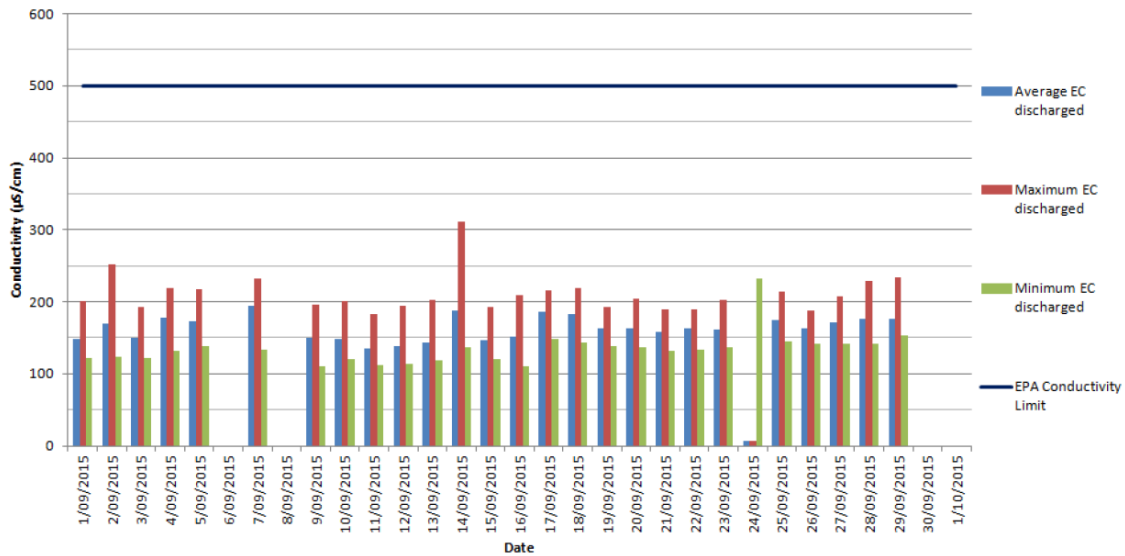
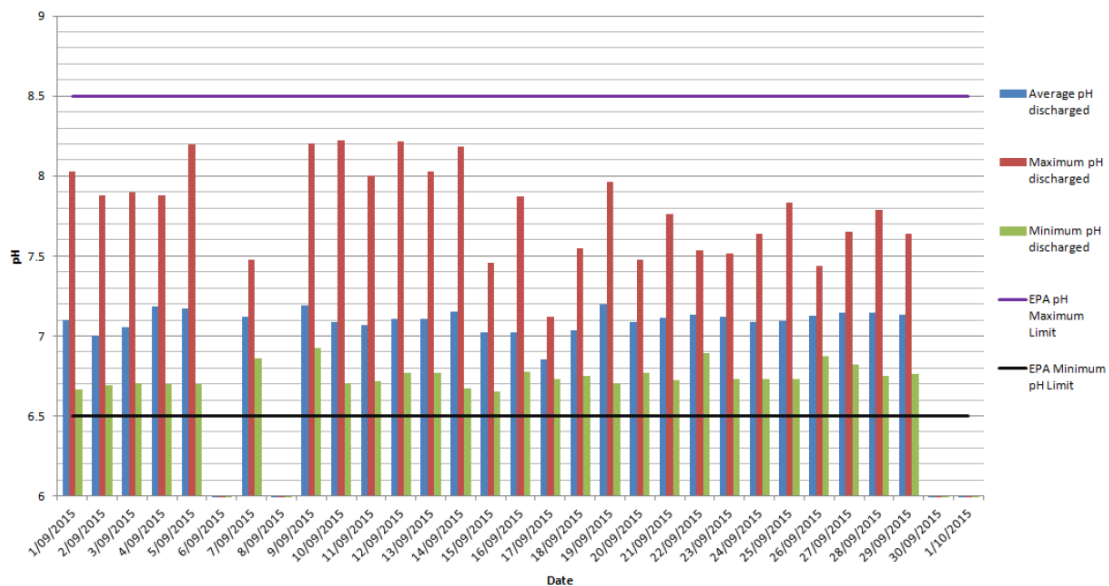


Figure 6 – pH (max, min & average / day)



Noise Monitoring

Environmental noise monitoring (“monitoring”) is carried out on a monthly basis.

The purpose of the monitoring is to assess whether mining operations are consistent with the objectives of the EPL and the development consent conditions.

In terms of this monitoring, it is undertaken:

1. by an independent noise consultant;
2. during the night-time; and
3. at the sites shown in Figure 9.

On pages 9 and 10 of this report are the noise levels and findings from the consultant’s report.

Table 4.2: L_{Aeq,15minute} GENERATED BY WCP AGAINST PROJECT APPROVAL IMPACT ASSESSMENT CRITERIA – SEPTEMBER 2015

Location	Start Date and Time	Wind Speed m/s ^{4,6}	VTG °C per 100m ^{4,6}	Criterion dB ⁵	Criterion Applies? ^{2,1}	WCP L _{Aeq,15min} dB ^{2,3}	Exceedance ⁵
N6	09/09/2015 23:26	1.0	5.0	35	No	IA	NA
N13	10/09/2015 01:48	0.0	4.8	36	No	20	NA
N14	09/09/2015 22:57	0.0	5.2	35	No	IA	NA
N15	09/09/2015 23:49	0.0	6.4	35	No	IA	NA
N16	10/09/2015 01:01	0.7	6.9	37	No	IA	NA
N17	10/09/2015 00:22	0.0	6.4	35	No	NM	NA
N18	09/09/2015 22:23	0.0	4.0	35	No	IA	NA

Notes:

- Noise emission limits apply for winds up to and including 3 metres per second at a height of 10 metres, temperature inversion conditions between 1.5°C and 3°C/100m with winds up to and including 2 m/s, or temperature inversion conditions up to and including 3°C/100m;
- These are results for WCP in the absence of all other noise sources;
- Bolded results in red are those greater than the relevant criterion (if applicable);
- Wind speed is sourced from WCP weather station, Vertical Temperature Gradient (VTG) is sourced from the WCP inversion tower;
- NA in criterion column means criteria are not applicable at this location, NA in exceedance column means atmospheric conditions outside conditions specified in development consent and so criterion is not applicable or criterion not specified; and
- Criterion may or may not apply due to rounding of meteorological data values.

Table 4.3: L_{A1,1minute} GENERATED BY WCP AGAINST PROJECT APPROVAL IMPACT ASSESSMENT CRITERIA – SEPTEMBER 2015

Location	Start Date and Time	Wind Speed m/s ^{4,6}	VTG °C per 100m ^{4,6}	Criterion dB ⁵	Criterion Applies? ^{2,1}	WCP L _{A1,1min} dB ^{2,3}	Exceedance ⁵
N6	09/09/2015 23:26	1.0	5.0	45	No	IA	NA
N13	10/09/2015 01:48	0.0	4.8	45	No	28	NA
N14	09/09/2015 22:57	0.0	5.2	45	No	IA	NA
N15	09/09/2015 23:49	0.0	6.4	45	No	IA	NA
N16	10/09/2015 01:01	0.7	6.9	45	No	IA	NA
N17	10/09/2015 00:22	0.0	6.4	45	No	NM	NA
N18	09/09/2015 22:23	0.0	4.0	45	No	IA	NA

Notes:

- Noise emission limits apply for winds up to and including 3 metres per second at a height of 10 metres, temperature inversion conditions between 1.5°C and 3°C/100m with winds up to and including 2 m/s, or temperature inversion conditions and including 3°C/100m;
- These are results for WCP in the absence of all other noise sources;
- Bolded results in red are those greater than the relevant criterion (if applicable);
- Wind speed is sourced from WCP weather station, Vertical Temperature Gradient (VTG) is sourced from the WCP inversion tower;
- NA in criterion column means criteria are not applicable at this location, NA in exceedance column means atmospheric conditions outside conditions specified in development consent and so criterion is not applicable or criterion not specified; and
- Criterion may or may not apply due to rounding of meteorological data values.

Table 4.4: L_{Aeq,15minute} GENERATED BY WCP AGAINST EPL ASSESSMENT CRITERIA – SEPTEMBER 2015

Location	Start Date and Time	Wind Speed m/s ^{4,6}	VTG °C per 100m ^{4,6}	Criterion dB ⁵	Criterion Applies? ^{2,1}	WCP L _{Aeq,15min} dB ^{2,3}	Exceedance ⁵
N6	09/09/2015 23:26	1.0	5.0	35	No	IA	NA
N13	10/09/2015 01:48	0.0	4.8	35	No	20	NA
N14	09/09/2015 22:57	0.0	5.2	35	No	IA	NA
N15	09/09/2015 23:49	0.0	6.4	35	No	IA	NA
N16	10/09/2015 01:01	0.7	6.9	35	No	IA	NA
N17	10/09/2015 00:22	0.0	6.4	35	No	NM	NA
N18	09/09/2015 22:23	0.0	4.0	35	No	IA	NA

Notes:

- Noise emission limits apply for winds up to and including 3 metres per second (at a height of 10 metres), temperature inversion conditions of up to up to and including 3°C/100m with winds up to and including 2 m/s, or temperature inversion conditions up to and including 3°C/100 metres;
- These are results for WCP in the absence of all other noise sources;
- Bolded results in red are those greater than the relevant criterion (if applicable);
- Wind speed is sourced from WCP weather station, Vertical Temperature Gradient (VTG) is sourced from the WCP inversion tower;
- NA in criterion column means criteria are not applicable at this location, NA in exceedance column means atmospheric conditions outside conditions specified in development consent and so criterion is not applicable or criterion not specified; and
- Criterion may or may not apply due to rounding of meteorological data values.

Table 4.5: L_{A1,1minute} GENERATED BY WCP AGAINST EPL IMPACT ASSESSMENT CRITERIA – SEPTEMBER 2015

Location	Start Date and Time	Wind Speed m/s ^{4,6}	VTG °C per 100m ^{4,6}	Criterion dB ⁵	Criterion Applies? ^{2,1}	WCP L _{A1,1min} dB ^{2,3}	Exceedance ⁵
N6	09/09/2015 23:26	1.0	5.0	45	No	IA	NA
N13	10/09/2015 01:48	0.0	4.8	45	No	28	NA
N14	09/09/2015 22:57	0.0	5.2	45	No	IA	NA
N15	09/09/2015 23:49	0.0	6.4	45	No	IA	NA
N16	10/09/2015 01:01	0.7	6.9	45	No	IA	NA
N17	10/09/2015 00:22	0.0	6.4	45	No	NM	NA
N18	09/09/2015 22:23	0.0	4.0	45	No	IA	NA

Notes:

- Noise emission limits apply for winds up to and including 3 metres per second (at a height of 10 metres, temperature inversion conditions of up to 3°C/100m with winds up to and including 2 m/s, or temperature inversion conditions up to and including 3 °C/100 metres;
- These are results for WCP in the absence of all other noise sources;
- Bolded results in red are those greater than the relevant criterion (if applicable);
- Wind speed is sourced from WCP weather station, Vertical Temperature Gradient (VTG) is sourced from the WCP inversion tower;
- NA in criterion column means the criteria are not applicable at this location, NA in exceedance column means atmospheric conditions outside conditions specified in development consent and so criterion is not applicable or criterion not specified; and
- Criterion may or may not apply due to rounding of meteorological data values.

6 SUMMARY OF COMPLIANCE

Environmental noise monitoring described in this report was undertaken during the night period of 9/10 September 2015. Attended noise monitoring was conducted at seven sites. The duration of all measurements was 15 minutes.

6.1 Operational Noise Assessment

Wilpinjong Coal Project (WCP) complied with noise limits at the monitoring locations during the September 2015 monitoring period.

6.2 Low Frequency Assessment

During September 2015, WCP complied with the relevant limits using the INP and Broner methods of assessing low frequency noise at all monitoring locations with the exception of N13.

At N13 the INP low frequency trigger level was exceeded. A 5 dB modifying factor correction was applied to the measured WCP L_{Aeq} . The resulting WCP L_{Aeq} noise level remained in compliance with project approval and EPL impact assessment criteria at this location.

Global Acoustics Pty Ltd

Wilpinjong Coal received report from Global Acoustics Pty Ltd on 29 September 2015.

Blasting

Monitoring is carried out near sensitive locations during blasting activities to determine the vibration in the air (overpressure) and earth (ground vibration). A summary of the results of this monitoring, and the limits specified in the EPL, are shown in Tables 3 and 4. Figure 7 shows the actual overpressure and vibration levels recorded during the month.

Table 3 – Overpressure Monitoring Results

Location	Month	Number of Blasts	Minimum overpressure (dB(L))	Maximum overpressure (dB(L))	Mean overpressure (dB(L))	EPL overpressure Limits (dB(L))	Exceedance (yes/no)
Approx. 50m west of the Wollar Public School	September	11	77.7	99.5	89.5	115dB (95% blasts) 120 dB (100% blasts)	no

Table 4 – Vibration Monitoring Results

Location	Month	Number of Blasts	Minimum vibration (mm/sec)	Maximum vibration (mm/sec)	Mean vibration (mm/sec)	EPL vibration Limits (mm/sec)	Exceedance (yes/no)
Approx. 50m west of the Wollar Public School	September	11	0.07	0.51	0.22	5 mm/s (95% blasts) 10 mm/s (100% blasts)	no

Figure 7. Overpressure (dBL) and Vibration (mm/sec) recorded during Month

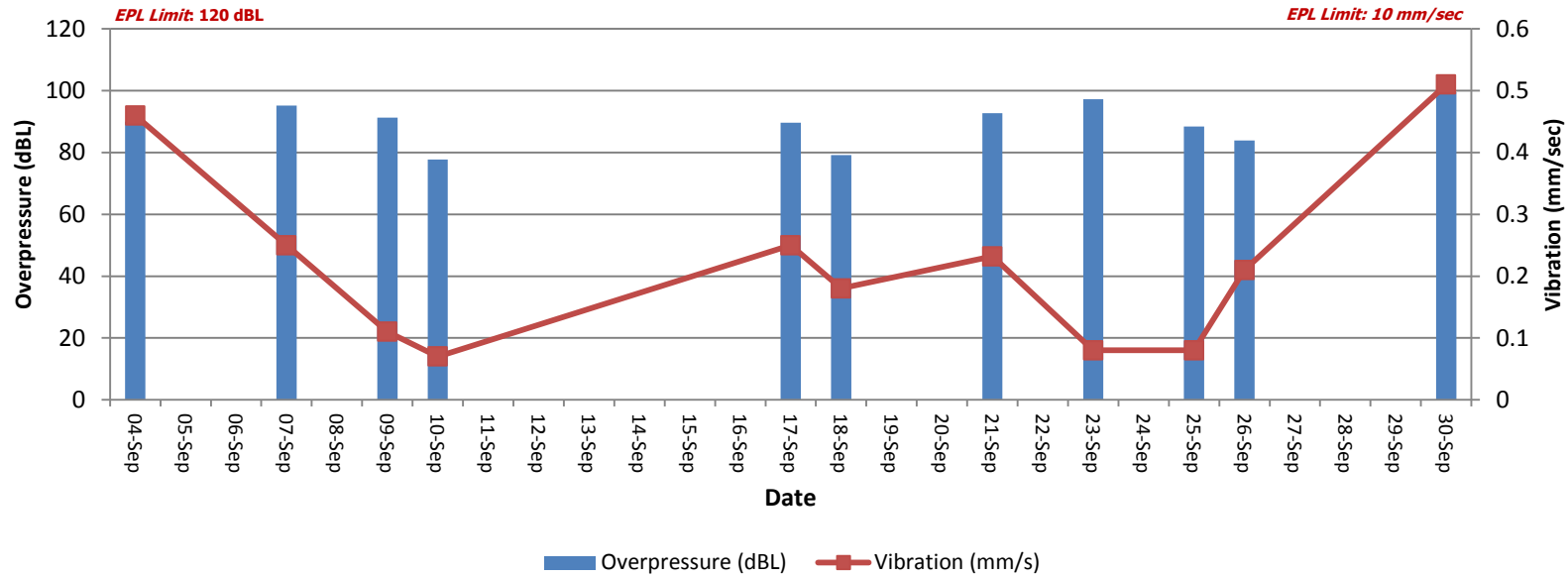


Figure 8 – Air (Dust) Monitoring Locations

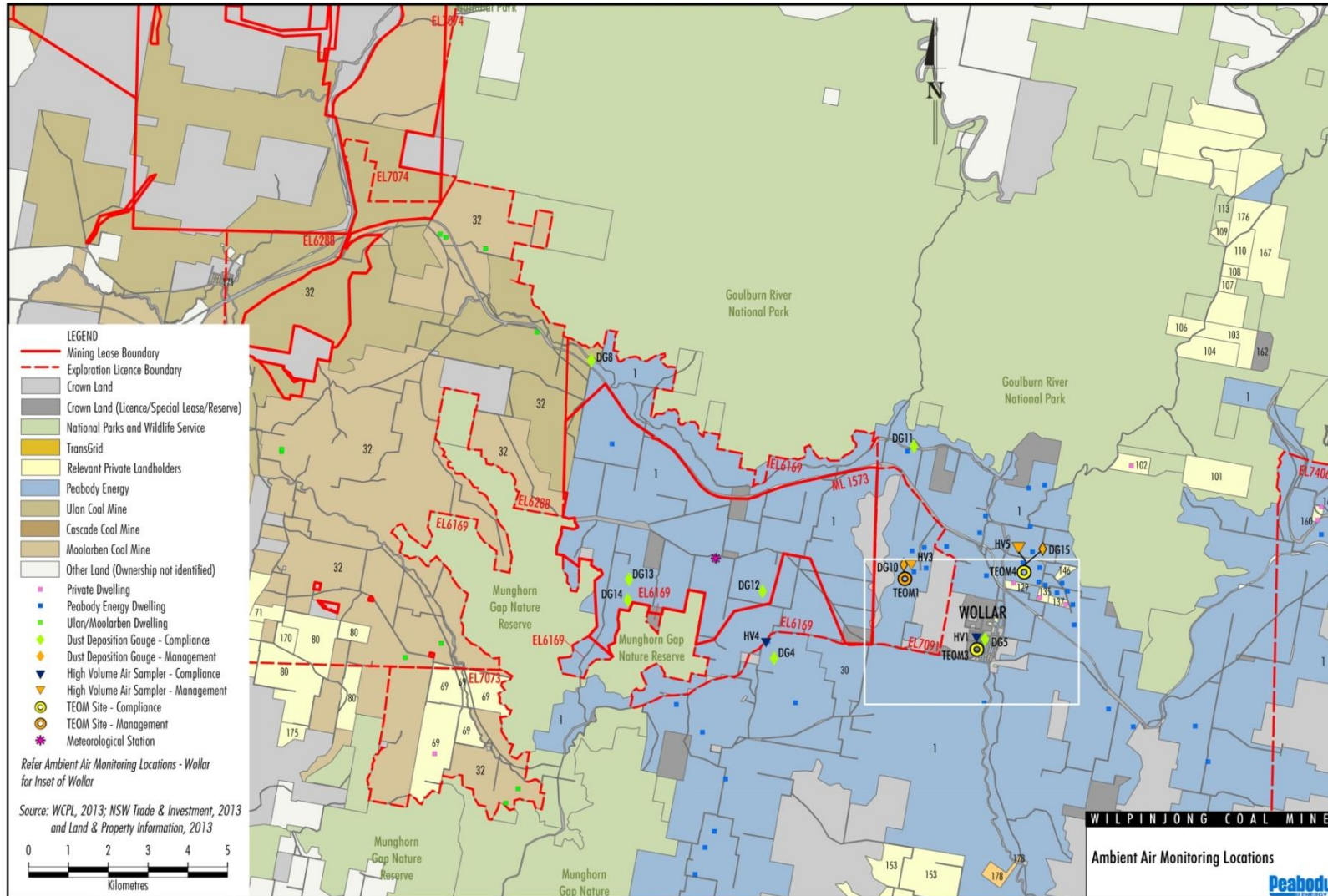




Figure 9 – Attended Noise Monitoring Locations

