

Final Landform and Visual Amenity Workshop

The Project team will be holding a workshop to discuss options around visual amenity during mining, post mining landforms, beneficial void use, biodiversity and grazing opportunities. We invite all those interested to attend the workshop and have input into the Project design and post mining opportunities for the site.

DATE: 27 January 2016
 LOCATION: School of Arts Hall, Jerrys Plains
 TIME: 2pm until 5pm
 RSVP: Aislinn Farnon - (02) 6578 9506

What You Value about the Local Area

As part of the Social Impact Assessment for the Project, we wanted to hear about the things that are of high value within the local area. These include parts of the landscape, the sense of community, locally significant infrastructure or other things that are important to you. You told us the local community values:

- **Well-farmed, high-quality, agricultural land:** There is a long history of agricultural activity in the local area which continues to this day. Some people expressed concern that, while the current Project is on land commonly understood to be of poorer quality, the wider mining industry was impacting on the diversity and sustainability of agricultural practices in the area more broadly.
- **Local halls and schools:** People expressed that they value the presence and use of community facilities, such as Warkworth Community Hall and Jerrys Plains School of Arts Hall, and there is an understanding that Jerrys Plains Primary School is a key part of the local community.
- **Rural lifestyles:** Many people we talked to had moved to the area either recently or some time ago, for the rural outlook, clean air, peace and quiet. Some people expressed concerns about how these qualities around which they had chosen their place to live would be threatened or impacted on by mining activity.

Would you like more information?

If you would like to be involved in the consultation program, or have any questions about the Project, please contact:

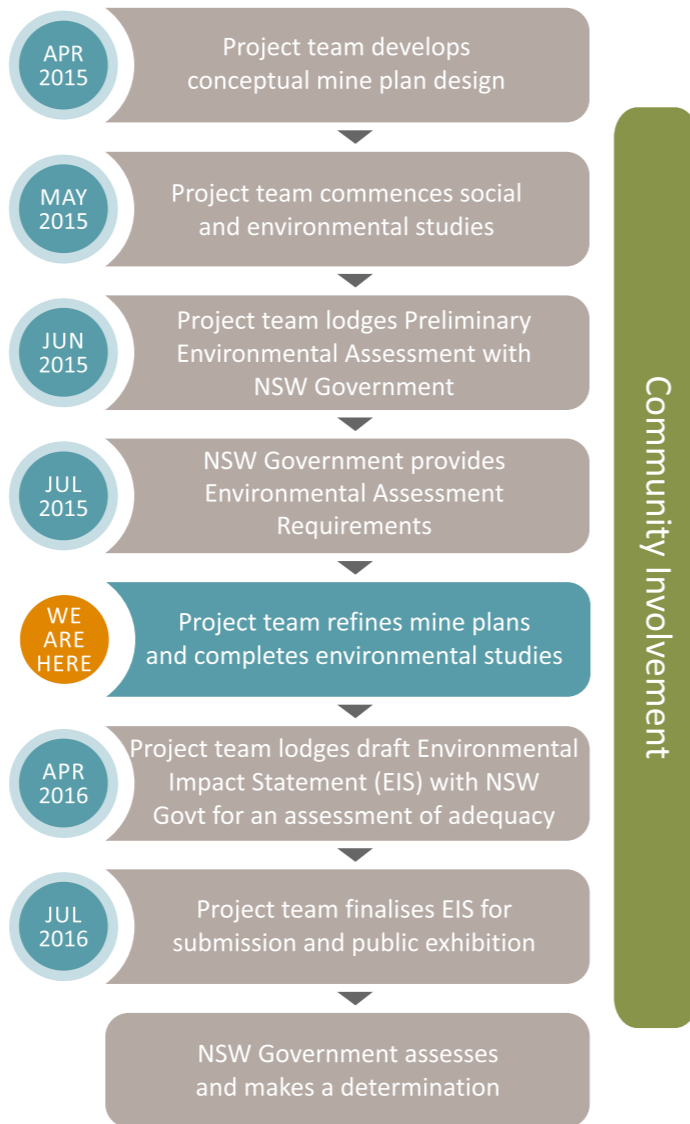
Aislinn Farnon
 Approvals Manager
 Glencore
 T (02) 6578 9506 or 0429 306 208
 E Aislinn.Farnon@glencore.com.au

Gary Wills
 Project Manager
 Glencore
 T (02) 6578 9403 or 0429 900 814
 E Gary.Wills@glencore.com.au

Where to from here?

Project Approvals Process

The following figure highlights where we are up to in our assessment process. We are currently refining our mine plans taking into account what you have said and completing assessment studies.



The assessment is progressing well and we hope to be back in the community in the first quarter of 2016 for a further update. Thank you for your input to date, and we look forward to your further involvement.

If you have any questions or concerns regarding the current approved Wambo Mine please contact:
Steve Peart
 Environment and Community Manager
 Wambo Mine
 T (02) 6570 2209
 E speart@peabodyenergy.com

We look forward to working with the local community and other key stakeholders as we move forward with the Project, and welcome your participation and feedback.



Community Newsletter

December 2015, Issue 3

United and Wambo Project Feedback Focus

Some of what you said...

While only a few residents could remember operations at United before they were suspended in March 2010, many residents commented on other mining operations in the area:

- Providing feedback when people call with questions or complaints could improve
- Community involvement and participation at local events needs to increase
- Dust and noise management could be improved
- Working to weather conditions needs to improve
- Truck beeping noise has improved
- Some leased properties owned by mining companies are poorly managed
- Early installation and vegetation of a visual bund has prevented issues

As many residents will now be aware, in November 2014 Glencore and Peabody Energy announced the establishment of a 50:50 Joint Venture (JV) Project combining the existing open cut operations at Wambo Coal and the adjacent coal reserves at United Collieries in the Hunter Valley, NSW.

A wide range of studies is underway for the Project, including a Social Impact Assessment that takes into consideration the experiences, perspectives and concerns of the local community. As part of the Social Impact Assessment we have been out in the community listening to local residents, groups and other stakeholders and letting them know about the Project.

This newsletter has been prepared to let you know what people have said about the existing mining operations, the Project and the wider mining industry.

Your thoughts on our existing operations and the Project

Consultation on the Project commenced in March 2015 and to date has involved a range of activities including:

- **30** face to face meetings with people and groups from Warkworth, Jerrys Plains, Bulga and Denman;
- **2** detailed phone conversations with those unable to meet in person;
- **125** phone calls and **15** door knocks made and attempt to contact neighbours;
- **2** newsletters distributed to over **550** households and available online; and
- **1** community information evening at Jerrys Plains School of Arts Hall attended by over **50** locals.

The consultation program is continuing, so if you haven't yet been able to see us and you would like to meet with us, please give us a call.

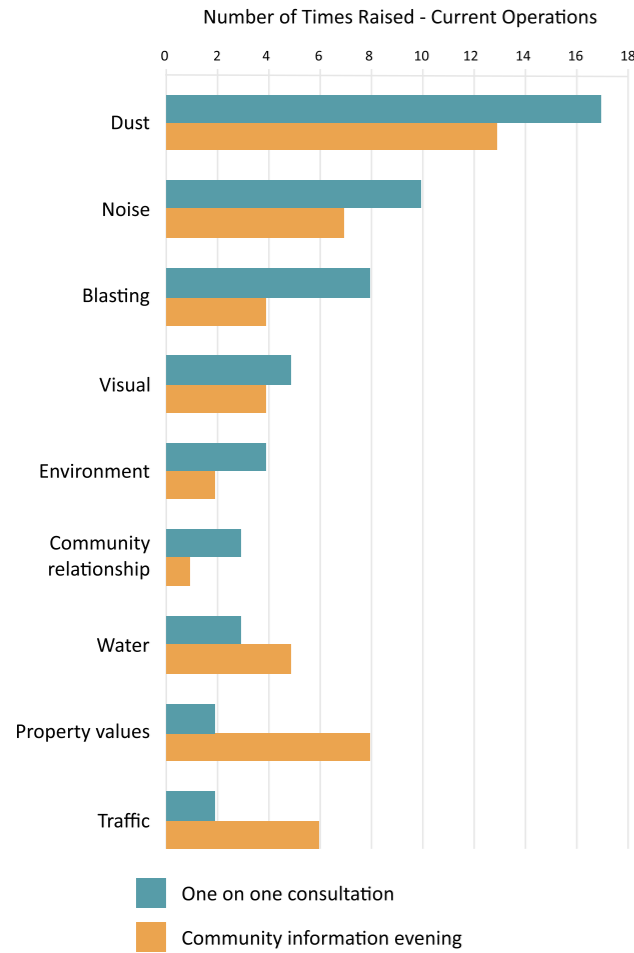
Community Information Evening - Jerrys Plains

There was a great turn out at the Project's first community information evening held on 10 June 2015. People were able to speak directly to the Project team, have their questions answered and issues recorded.

For every feedback form filled out on the night, United made a contribution to the Jerrys Plains School of Art Hall Committee. A total of \$360 was raised.

Your Issues and Concerns about Current Operations

People and groups were asked if they had any issues or concerns with current operations at United and/or Wambo. Issues raised were:



In relation to the current operations, dust issues were largely cumulative, and related to health impacts on people and livestock. Other dust concerns included the need for increased maintenance required around houses/properties, such as cleaning sludge out of water tanks.

Like dust, you reported that noise impacts were often cumulative and worse at night. You also said the visual impact of current mining operations in the area was important. Many residents, especially those owning property within exploration lease areas, had concerns around the value and saleability of their properties.

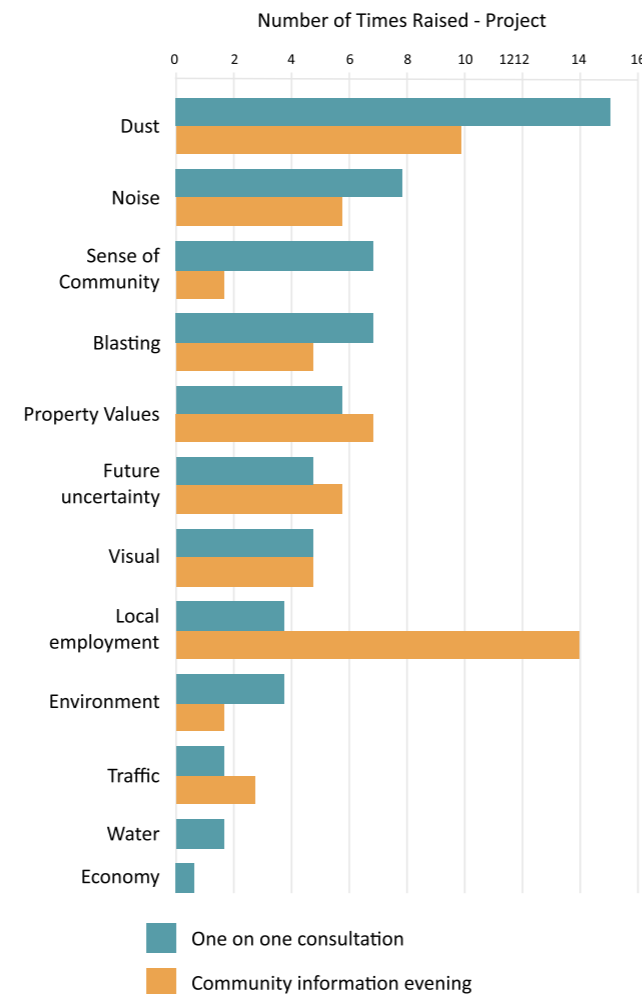
Neighbouring landholders and community groups were also asked if they had any concerns about impacts on their properties due to mine owned land management. Overall, people said that there seemed to be an increase in wild pigs and dogs in the area recently, and that invasive weed species in mine owned lands were an ongoing, although more minor, concern.

Your Perspectives on the Project

Everyone we spoke with wanted to learn about the Project and many people shared their thoughts and concerns about how it might relate to them.

“I hope that after you finish you will give back something as beautiful as what we started with.”

Overall, local residents wanted to see dust, noise and blasting impacts minimised or mitigated where they are unavoidable. There was also a strong desire in the community to see local people employed, should the Project be approved. A number of people we spoke to, who live within exploration leases are concerned about the uncertainty of potential mining closer to Jerrys Plains, and the potential impact it may have on their lives and livelihoods.



Community Needs and Expectations

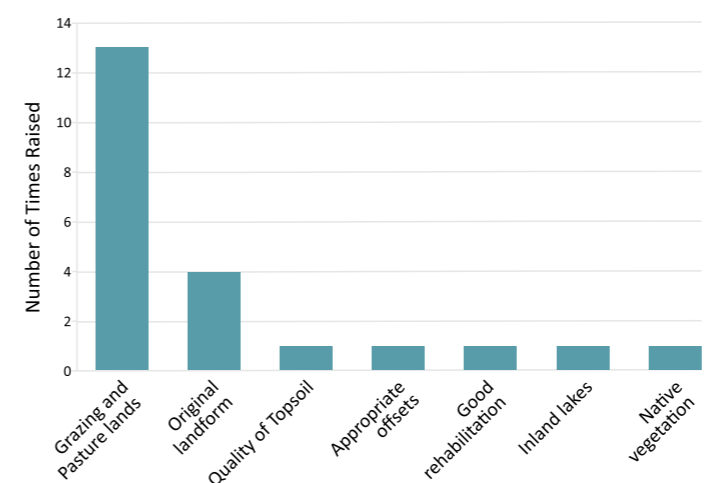
As part of the assessment process, the Project team wishes to understand the community's expectations and how local mining operators can be more active participants in the local community.

You told us that credibility, transparency, honesty, neighbourliness and dealing fairly with employees and neighbours are all important characteristics expected not only of the JV, but all mining operators in the area. In looking for ways in which the JV might assist the local community, we asked what opportunities and needs existed locally. You told us you wanted:

services for the elderly
 more community events
 a nice café or village centre facility
 something for the kids
 to put Jerrys on the sewer
 to do something support for local hall and schools
 to put in an RV waste disposal facility
 to fix our roads
 a medical centre
 support of junior sport
 us to provide time for employees to volunteer locally
 a local trust fund
 public transport

What should happen after mining?

We were also interested in your thoughts on our life-of-mine planning process, where we start working towards what we may leave behind once mining is complete. We asked what people wished to see in this regard; this is what you highlighted as important for us to consider:



Benefits and Costs of Mining generally

We also asked you to outline what you saw as the benefits and costs of mining more generally in the region.

Local employment, contribution to the local economy through the use of contractors and suppliers and local sponsorships and contributions were highlighted as some of the benefits. Costs included dust/air quality, the impact on agriculture, the price of goods and services and visual impacts.

These benefits and costs were generally reflective of those you also mentioned to us at the community information evening.

