

WAMBO COAL PTY LIMITED

MONTHLY ENVIRONMENTAL MONITORING REPORT

November 2014

Table of Contents

1.0	INTRODUCTION	3
2.0	METEOROLOGICAL DATA	3
2.1.	Rainfall	3
2.2.	Wind.....	3
3.0	SURFACE WATER SAMPLING	4
3.1.	Hunter River Salinity Trading Scheme (HRSTS).....	5
4.0	GROUNDWATER SAMPLING	5
5.0	DEPOSITIONAL DUST SAMPLING.....	6
6.0	HIGH VOLUME AIR SAMPLING	8
7.0	BLAST EVENTS	9
8.0	NOISE MONITORING	11
8.1.	Attended Monitoring.....	11
8.2.	Real Time Monitoring.....	11
9.0	REAL-TIME AIR QUALITY MONITORING.....	11
10.0	COMMUNITY COMPLAINTS.....	13

Tables

Table 1 - Monthly Surface Water Results – November 2014	4
Table 2 - Ground Water Results – November 2014	5
Table 3 - Dust Deposition Results – November 2014	6
Table 4 - HVAS Results – November 2014	8
Table 5 - Blasting Criteria Limits.....	9
Table 6 - Blast Results – November 2014.....	10
Table 7 - PM10 Results – November 2014	12

Figures

Figure 1 - Monthly and Cumulative Rainfall.....	3
Figure 2 - Deposition Dust Gauge Results – November 2014	7
Figure 3 - HVAS YTD Annual Average – November 2014.....	8
Figure 4 - 24 Hour Average PM ₁₀ Results – November 2014	13

Appendix A Meteorological Data

Appendix B Surface Water Graphs

1.0 Introduction

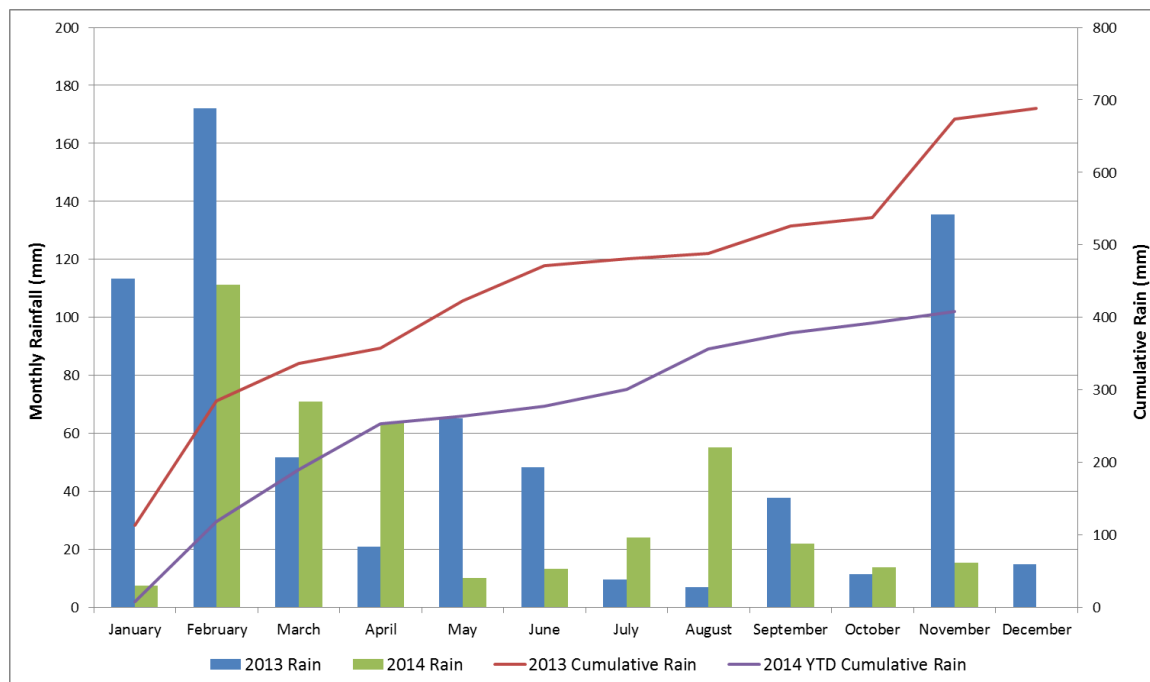
This report presents environmental monitoring results for the reporting period **Saturday 1st November to Sunday 30th November 2014**. Monitoring during this period includes meteorological measurement, surface and ground water sampling, depositional dust sampling, High Volume Air Sampling, blasting events and PM₁₀ real time air monitoring results.

2.0 Meteorological Data

2.1. Rainfall

Approximately **15.4mm** of rain was received during November. Year to date rainfall in comparison to 2013 results are shown in **Figure 1**.

Figure 1 - Monthly and Cumulative Rainfall



2.2. Wind

Results for reporting period are available in **Appendix A**.

3.0 Surface Water Sampling

Surface water samples are collected in accordance with **AS/NZS 5667.4:1998 – Guidance on sampling from lakes, natural and man-made** and **AS/NZS 5667.6:1998 – Guidance on sampling of rivers and streams**. All samples collected were analysed in the field for **pH**, electrical conductivity (**EC**) and temperature. Selected sites were analysed in a **NATA*** accredited laboratory for total suspended solids (**TSS**) and total dissolved solids (**TDS**).

*National Association of Testing Authorities - **NATA** is the authority that provides independent assurance of technical competence.

Historical trend charts for SW15 (Eagles Nest Dam – Discharge Point) and SW01, SW40 and SW02 (Wollombi Brook Upstream and Downstream locations) are available in **Appendix B**.

November results are detailed below in **Table 1**.

Table 1 - Monthly Surface Water Results – November 2014

Sample Location	pH	EC (µS/cm)	TSS (mg/L)	TDS (mg/L)	Oil & Grease (mg/L)	Temp (°C)	Comments
WOLLOMBI BROOK							
SW01 - Wollombi Brook Up	7.80	683	8	354	-	24.3	-
SW03 - Wollombi Brook Pump Out	7.70	953	8	501	<2	23.3	-
SW02 - Wollombi Brook Down	7.80	1,011	9	524	<2	25.2	-
SW40 - Confluence with SWC	7.90	660	10	341	-	24.4	-
NORTH WAMBO CREEK							
SW04 - North Wambo Creek Up	-	-	-	-	-	-	Dry
SW27a - North Wambo Creek Middle Lower	8.40	1,322	48	804	-	19.4	-
SW32a - North Wambo Creek Pump	-	-	-	-	-	-	Dry
SW05 - North Wambo Creek Down	7.60	1,721	45	1,040	-	19.3	-
SOUTH WAMBO/STONY CREEK							
SW06 - South Wambo Creek	-	-	-	-	-	-	Dry
SW07 - South Wambo/Stony Creek	-	-	-	-	-	-	Dry
SW08 - Stony Creek	-	-	-	-	-	-	Dry
LONGFORD/DOCTOR'S CREEKS							
SW43 - Longford Creek Up	7.80	463	235	414	<2	23.4	-
SW44 - Longford Creek Down	-	-	-	-	-	-	Dry
SW46 - Doctors Creek Up	-	-	-	-	-	-	Dry
SW45 - Doctors Creek Down	-	-	-	-	-	-	Dry
WATERFALL CREEK							
SW39 - Waterfall Creek Midstream	-	-	-	-	-	-	Dry
MINE WATER DAMS							
SW11 - West Cut Dam Pipe	Not Pumping						-
SW12 - West Cut Dam	8.80	8,540	-	-	-	25.3	-

Sample Location	pH	EC (µS/cm)	TSS (mg/L)	TDS (mg/L)	Oil & Grease (mg/L)	Temp (°C)	Comments
SW14 - Box Cut Dam (Admin)	8.20	701	-	-	-	25.0	-
SW15 - Eagles Nest Dam	9.10	8,970	29.00	5,780	2	25.0	-
SW20 - Dam Adjacent to West Cut Dam	-	-	-	-	-	-	Dry
SW29 - SCB Dam	-	-	-	-	-	-	Dry
SW30 - Turkeys Nest	-	-	-	-	-	-	No Access
SW31 - Gordon Below Franklin	9.20	9,190	-	-	-	24.6	
SW37 - Wollemi Sump	-	-	-	-	-	-	No longer exists
SW38 - Homestead Open Cut	8.80	9,630	-	-	-	25.7	-
SW47 - NWU Pumpout Water	-	-	-	-	-	-	No longer exists
SW48 - Inpit sample	-	-	-	-	-	-	No longer exists
SW49 - Bates Pit Pumpout	-	-	-	-	-	-	No access
SW51 - South Dam	-	-	-	-	-	-	Decommissioned
SW50 - Hunter River Water	Not Pumping						-

Note: Figures in bold fall outside trigger levels.

3.1. Hunter River Salinity Trading Scheme (HRSTS)

During the reporting period no water was discharge under the HRSTS.

4.0 Groundwater Sampling

Groundwater results are collected on a bi-monthly basis. No data was collected for November

Table 2 - Ground Water Results – November 2014

Sample Location	pH	EC (µS/cm)	Depth to Water (m)	Temp (°C)	Comments
GW02	-	-	-	-	-
GW11	-	-	-	-	-
P106	-	-	-	-	-
P109	-	-	-	-	-
P110	-	-	-	-	-
P111	-	-	-	-	-
P114	-	-	-	-	-
P116	-	-	-	-	-
P202	-	-	-	-	-
P206	-	-	-	-	-
P301	-	-	-	-	-
P315	-	-	-	-	-
GW12	-	-	-	-	-
GW13	-	-	-	-	-
GW14	-	-	-	-	-
GW15	-	-	-	-	-
GW16	-	-	-	-	-
GW17	-	-	-	-	-
GW18	-	-	-	-	-
GW19	-	-	-	-	-
GW20	GW20 is a vibration wire multi-piezometer installation				

Sample Location	pH	EC ($\mu\text{S/cm}$)	Depth to Water (m)	Temp ($^{\circ}\text{C}$)	Comments
GW21	-	-	-	-	-
GW22	-	-	-	-	-
P1*	-	-	-	-	-
P3*	-	-	-	-	-
P5*	-	-	-	-	-
P6*	-	-	-	-	-
P11*	-	-	-	-	-
P12*	-	-	-	-	-
P13*	-	-	-	-	-
P15*	-	-	-	-	-
P16*	-	-	-	-	-
P17*	-	-	-	-	-
P18*	-	-	-	-	-
P20*	-	-	-	-	-

Note: All depths measured to top of casing, except United bores which are to ground. Figures in bold are outside trigger levels listed in Table 5 of the Ground Water Monitoring Programme (GWMP), which is part of the Site Water Management Plan.

* Represents data that is provided on a quarterly basis. The results are to be updated once available.

5.0 Depositional Dust Sampling

Fifteen depositional dust gauges were collected for the reporting period. Sampling and analysis is conducted in accordance with **AS 3580.10.1 – 1991 – Determination of particulates – Deposited matter – Gravimetric method**. All gauges were analysed for insoluble solids (IS) and ash residue (AS). Field observations include water quantity and quality, and any visible contaminants in the sample.

Insoluble solid results are reported on the **annual average** of **4g/m²/month** of all **uncontaminated results** which are not located on Wambo Coal owned land. No depositional dust gauge locations were outside the prescribed criteria level for the reporting period.

November results are presented in **Table 3** and **Figure 2** below.

Table 3 - Dust Deposition Results – November 2014

Site	Insoluble Solids (IS) (g/m ² .month)	Ash Residue (AR) (g/m ² .month)	IS:AR Ratio	IS YTD Average (g/m ² .month)	AR YTD Average (g/m ² .month)
D01*	3.9	1.6	41	2.9	2.0
D03*	2.2	1.2	55	4.0	2.0
D07*	7.1	3.9	55	6.0	3.4
D09*	12.6	4.3	34	2.0	1.6
# D11	11.2	2.0	18	2.5	1.5
# D12*	3.8	3.1	82	3.3	2.2

Site	Insoluble Solids (IS) (g/m ² .month)	Ash Residue (AR) (g/m ² .month)	IS:AR Ratio	IS YTD Average (g/m ² .month)	AR YTD Average (g/m ² .month)
# D17	1.7	1.3	76	1.8	1.1
D19	5.1	3.1	61	2.9	1.7
D20	2.1	1.7	81	1.7	1.2
# D21	2.70	2.30	85	1.8	1.3
# D22	3.6	2.6	72	2.2	1.6
D23	2.5	1.7	68	2.1	1.3
# D24	8.8	2.3	26	1.4	0.8
# D25	3.50	2.70	77	2.7	1.9
D26	3.2	2.2	69	2.0	1.4

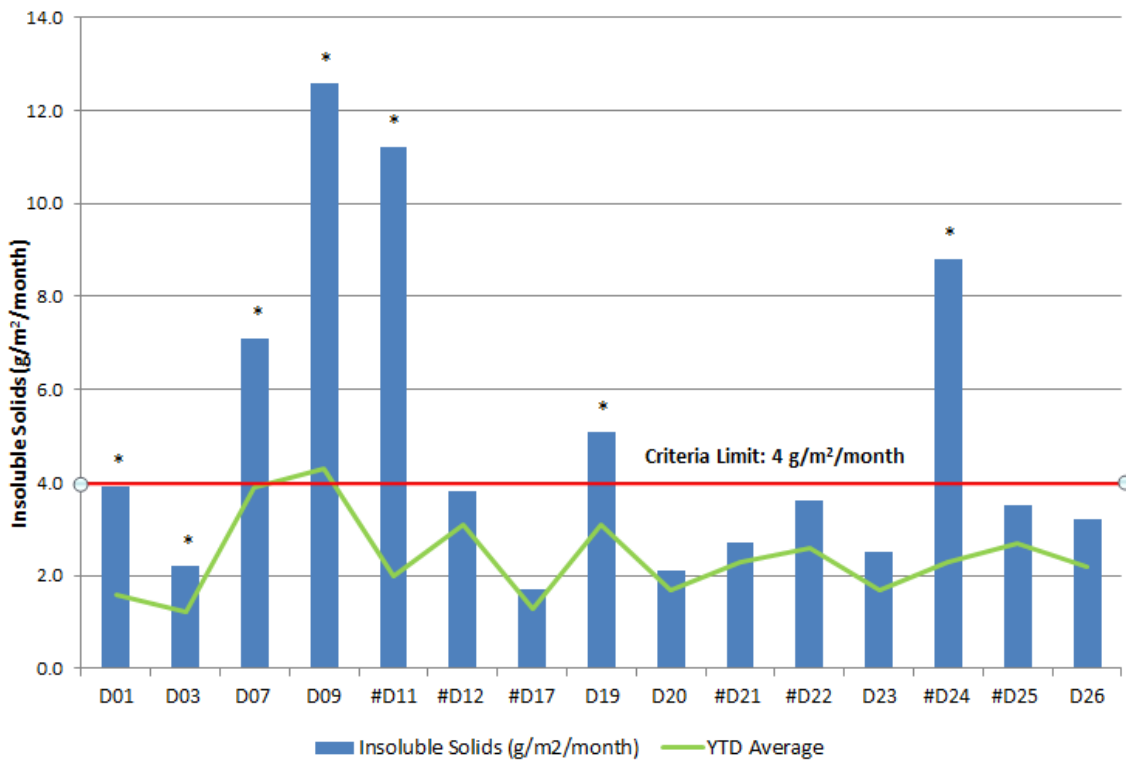
Note:

Results in **bold** are YTD average above 4g/m²/month

Results # are dust gauges not on WCPL owned land. DD gauges on Wambo Coal land and above criteria level are not considered non-compliance.

* Contaminated sample

Figure 2 - Deposition Dust Gauge Results – November 2014



Note:

* Monthly sample contaminated by bird droppings, vegetation, insects.

Depositional dust gauges not located on WCPL owned land. Results above criteria at these locations not considered non-compliances.

6.0 High Volume Air Sampling

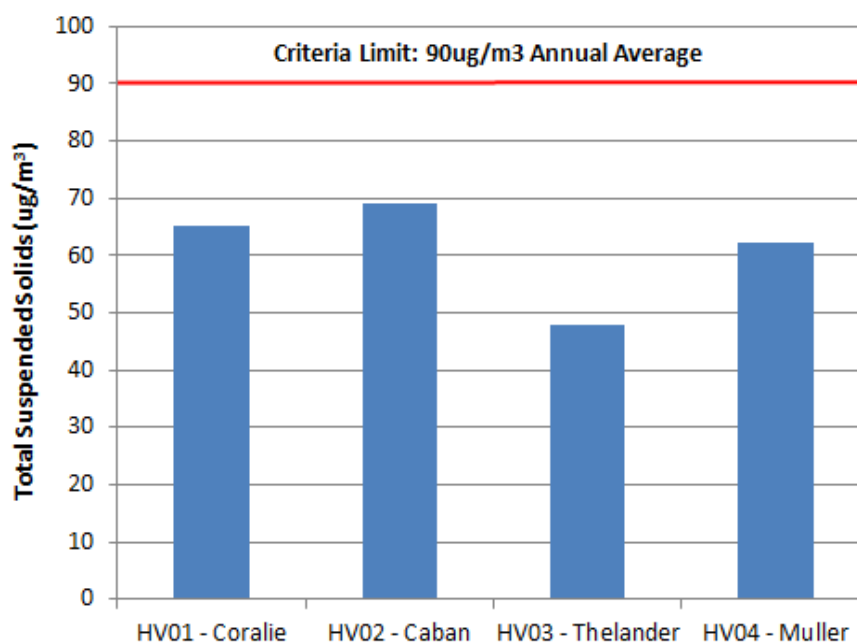
Four High Volume Air Samplers (HVAS) operate at locations surrounding Wambo. All units sampled Total Suspended Particulates (TSP) over a 24-hour period on a six day cycle, in accordance with **AS 2724.3 – 1984 – Determination of total suspended particulates (TSP) – High volume sampler gravimetric method.** Reported yearly means for locations are within the reporting criteria of **90 $\mu\text{g}/\text{m}^3$** .

November results are presented in **Table 4** and **Figure 3** below.

Table 4 - HVAS Results – November 2014

Date of Run	HV01 - Coralie TSP ($\mu\text{g}/\text{m}^3$)	HV02 - Caban TSP ($\mu\text{g}/\text{m}^3$)	HV03 - Thelander TSP ($\mu\text{g}/\text{m}^3$)	HV04 - Muller TSP ($\mu\text{g}/\text{m}^3$)
6/11/2014	70.8	75.4	67.5	63.3
12/11/2014	106	97.7	98.1	109
18/11/2014	81	72.4	76	73.3
24/11/2014	191	138	136	168
30/11/2014	103	83.1	41.6	85.9
Monthly Mean	110.36	93.32	83.84	99.90
Yearly Mean	65.2	69.0	47.9	62.2

Figure 3 - HVAS YTD Annual Average – November 2014



7.0 Blast Events

Four monitoring sites measure ground vibration and air blast overpressure for blasts conducted at Wambo. **Five** blasts were conducted during the reporting period. Monitoring at all four sites is conducted under the blast monitoring requirements set out in the **Wambo EPA licence (EPL 529) and DA 305-7-2003**. The blasting criteria are summarised in **Table 5** below.

Table 5 - Blasting Criteria Limits

Airblast Overpressure (dB(L))	Allowable exceedance
115	5% of the total number of blasts over a period of 12 months
120	0%
Ground Vibration (mm/s)	Allowable exceedance
5	5% of the total number of blasts over a period of 12 months
10	0%

All measured blast events for November 2014 were within the prescribed criteria limits. Blast results are presented in **Table 6** below.

Table 6 - Blast Results – November 2014

Date	Time	Location	Kelly Residence – A0728			Wambo Homestead – A0722			Harris Site – A6006			Muller Residence – A6005		
			Over Pressure (dB(L))	Vibration (mm/s)	Wave-form	Over Pressure (dB(L))	Vibration (mm/s)	Wave-form	Over Pressure (dB(L))	Vibration (mm/s)	Wave-form	Over Pressure (dB(L))	Vibration (mm/s)	Wave-form
5/11/2014	15:20:44	M17WMA1, M20RCA5	107.6	0.18	YES	104.8	0.19	YES	106.1	0.17	YES	104	0.6	YES
12/11/2014	15:38:05	BS5WTA1	102	0.25	YES	102.5	0.38	YES	101.2	0.35	YES	104.9	0.12	YES
14/11/2014	11:34:36	BS5WTA2	99.2	0.18	YES	<115.0	<0.16	NO	104.2	0.14	YES	94.7	0.07	YES
14/11/2014	11:42:22	M20RCA6	101.6	0.06	YES	<115.0	<0.16	NO	108.9	0.06	YES	95.6	0.46	YES
24/11/2014	14:36:18	M15WRC4	97.3	0.09	YES	101	0.18	YES	100.5	0.25	YES	97.7	0.42	YES

Date	Time	Location	Thelander Residence – A8047		
			Over Pressure (dB(L))	Vibration (mm/s)	Wave-form
5/11/2014	15:20:44	M17WMA1, M20RCA5	104.4	0.85	YES
12/11/2014	15:38:05	BS5WTA1	98.4	0.15	YES
14/11/2014	11:34:36	BS5WTA2	100.9	0.08	YES
14/11/2014	11:42:22	M20RCA6	99.8	0.53	YES
24/11/2014	14:36:18	M15WRC4	99.8	0.36	YES

8.0 Noise Monitoring

8.1. Attended Monitoring

Attended noise monitoring is undertaken on a monthly basis and can be found on the Peabody Wambo website at www.peabodyenergy.com/content/404/Australia-Mining-New/New-South-Wales/Wambo-Mine.

8.2. Real Time Monitoring

Real time noise monitoring results are reported in a quarterly format and can be found on the Peabody Wambo website at www.peabodyenergy.com/content/404/Australia-Mining-New/New-South-Wales/Wambo-Mine.

9.0 Real-Time Air Quality Monitoring

Four real time Tapered Element Oscillating Microbalance (**TEOM**) units were in operation during the reporting period. The sites are located at Coralie (**PM01**), the Caban residence (**PM02**), Thelander residence (**PM03**) and the Muller residence (**PM04**). These units measure particulate matter less than 10 microns in diameter (PM_{10}) on a continuous basis and provide a 24 hour average result. These units operated and sampled in accordance with **AS 3580.9.8 - 2002, Method for Sampling and Analysis of Ambient Air - Determination of Suspended Particulate Matter - PM_{10} Continuous Direct Mass Method using a Tapered Element Oscillating Microbalance Analyser.**

November results are presented in **Table 7** and **Figure 4** below.

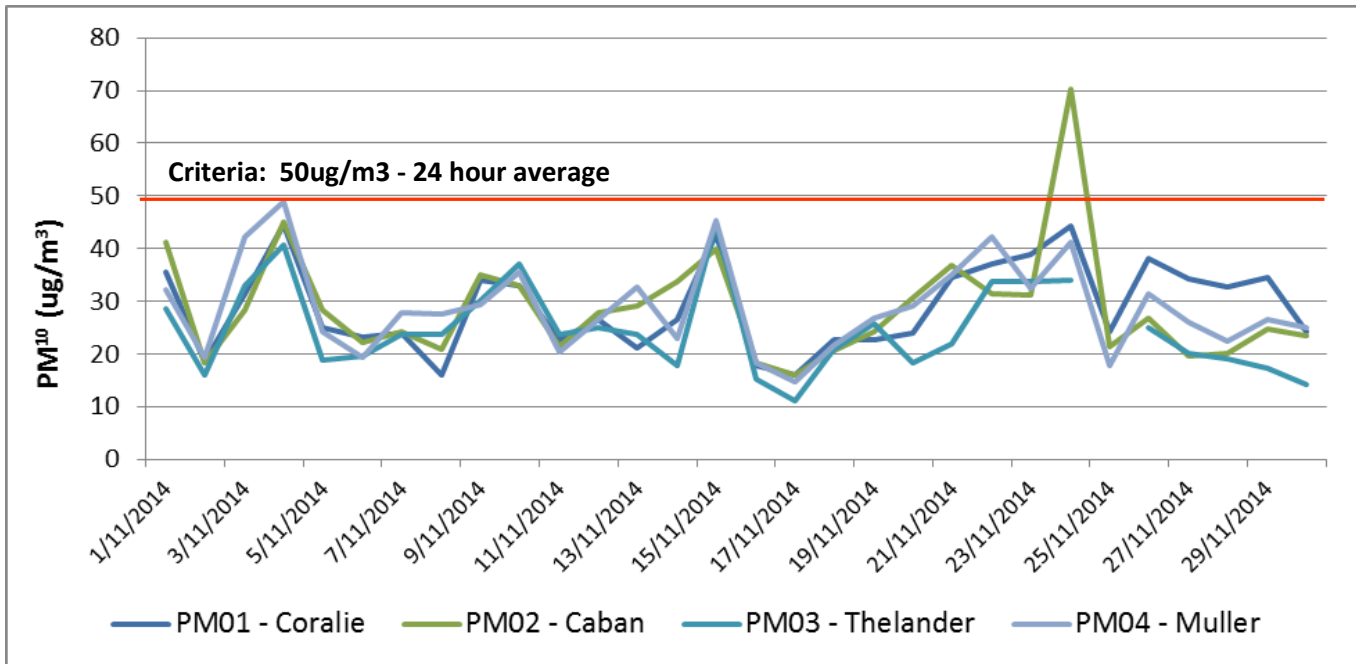
All PM_{10} sites were within the yearly average criteria limits of $30\mu\text{g}/\text{m}^3$. A single recording at **PM02** was outside of the 24hr average criteria of $50\mu\text{g}/\text{m}^3$ on the 24th November.

Table 7 - PM₁₀ Results – November 2014

Date of Run	PM01 (Coralie)		PM02 (Wambo Road)		PM03 (Thelander)		PM04 (Muller)	
	PM10 24 Hour Result (ug/m ³)	YTD Average	PM10 24 Hour Result (ug/m ³)	YTD Average	PM10 24 Hour Result (ug/m ³)	YTD Average	PM10 24 Hour Result (ug/m ³)	YTD Average
1/11/2014	35.5	16.4	41.3	18.2	28.6	14.3	32.3	16.6
2/11/2014	18.5	16.4	18.3	18.2	16.1	14.3	19.3	16.6
3/11/2014	31.5	16.4	28.2	18.2	32.9	14.4	42.3	16.7
4/11/2014	44.6	16.5	45.0	18.3	40.8	14.5	48.9	16.8
5/11/2014	25.1	16.6	28.2	18.4	18.9	14.5	24.2	16.8
6/11/2014	23.2	16.6	22.2	18.4	19.6	14.5	19.2	16.8
7/11/2014	24.0	16.6	24.1	18.4	23.7	14.5	27.7	16.8
8/11/2014	16.1	16.6	20.8	18.4	23.8	14.5	27.5	16.9
9/11/2014	34.1	16.7	35.0	18.5	30.0	14.6	29.3	16.9
10/11/2014	32.9	16.7	33.0	18.5	37.1	14.7	35.6	17.0
11/11/2014	22.6	16.7	21.3	18.5	23.7	14.7	20.4	17.0
12/11/2014	26.5	16.8	27.8	18.5	24.9	14.7	26.6	17.0
13/11/2014	21.2	16.8	29.0	18.6	23.6	14.8	32.7	17.1
14/11/2014	26.4	16.8	33.8	18.6	17.9	14.8	23.0	17.1
15/11/2014	42.7	16.9	40.0	18.7	44.8	14.9	45.2	17.2
16/11/2014	17.8	16.9	18.2	18.7	15.2	14.9	18.4	17.2
17/11/2014	15.9	16.9	16.0	18.7	11.2	14.8	14.8	17.2
18/11/2014	22.6	16.9	20.5	18.7	20.9	14.9	21.7	17.2
19/11/2014	22.7	16.9	24.1	18.7	25.8	14.9	26.9	17.2
20/11/2014	24.0	17.0	30.7	18.7	18.4	14.9	29.0	17.2
21/11/2014	34.5	17.0	36.8	18.8	22.0	14.9	35.0	17.3
22/11/2014	37.1	17.1	31.5	18.8	33.6	15.0	42.3	17.4
23/11/2014	38.9	17.1	31.1	18.9	33.6	15.1	32.5	17.4
24/11/2014	44.3	17.2	70.2	19.0	33.9	15.1	41.2	17.5
25/11/2014	24.3	17.3	21.3	19.0	NRR	NRR	17.9	17.5
26/11/2014	38.1	17.3	26.8	19.1	24.9	15.1	31.3	17.5
27/11/2014	34.2	17.4	19.5	19.1	20.2	15.2	25.9	17.6
28/11/2014	32.8	17.4	20.0	19.1	19.0	15.2	22.4	17.6
29/11/2014	34.4	17.5	24.7	19.1	17.2	15.2	26.4	17.6
30/11/2014	24.1	17.5	23.4	19.1	14.3	15.2	25.0	17.6

Note:
 Results in **red** are greater than the 24hr period guidelines of 50ug/m³
 Results in **bold** are between 30ug/m³ and 50ug/m³
 NRR – No Result Recorded as monitor offline.

Figure 4 - 24 Hour Average PM₁₀ Results – November 2014



10.0 Community Complaints

During the reporting period **nil** complaints were received. Thirty one complaints have been received year to date, compared to twenty eight during the same reporting period in 2013.

Details of the community complaints are available on the Peabody Wambo website at www.peabodyenergy.com/content/422/Australia-Mining/New-South-Wales/Wambo-Mine/Approvals-Plans-and-Reports-Wambo-Mine.

Appendix A
Wambo Weather Station
Meteorological Data

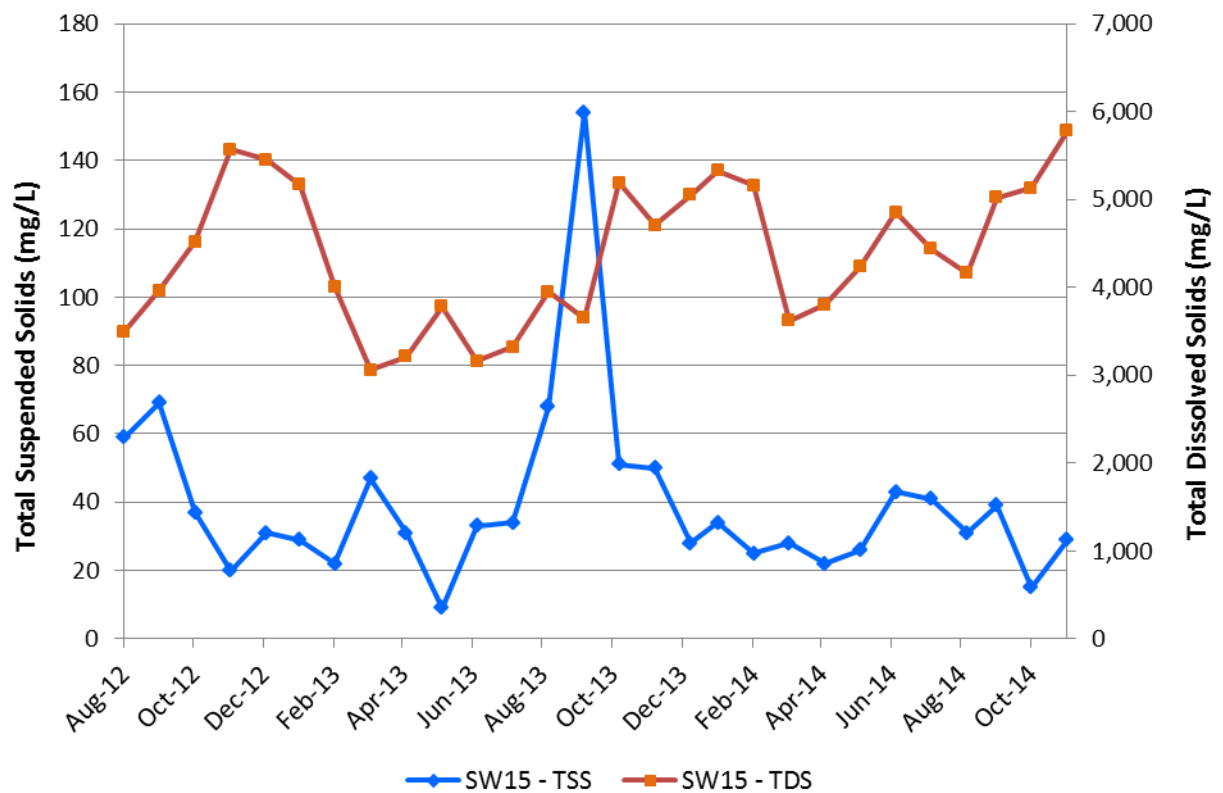
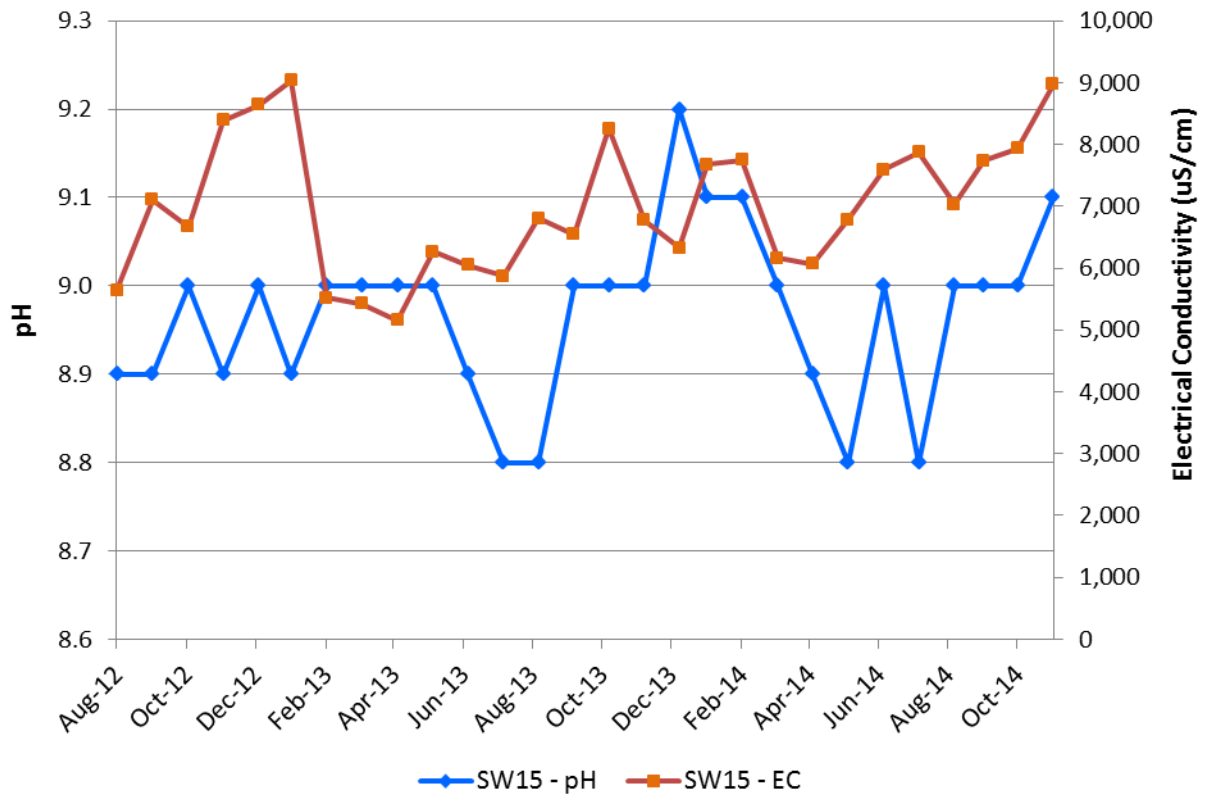
Meteorological Data November 2014

Date	Temperature (2m)			Temperature (10m)			Temperature Inversion			Humidity			Solar Radiation			Rain	Wind Speed		
	Min	Avg	Max	Min	Avg	Max	Min	Avg	Max	Min	Avg	Max	Min	Avg	Max	mm	Min	Avg	Max
01/11/14	20.3	28.0	36.3	21.3	28.3	35.6	-10.9	3.8	15.4	27.4	44.0	65.3	-1.7	250.8	1006.0	0.0	1.3	3.2	5.0
02/11/14	12.9	19.7	27.9	13.7	19.9	27.2	-20.5	2.4	26.9	13.2	29.6	62.7	-1.8	328.7	972.9	0.0	1.3	2.3	3.8
03/11/14	8.5	17.3	25.3	10.2	17.7	24.9	-9.9	4.7	26.9	29.7	56.0	84.9	-2.0	286.8	1009.5	0.0	0.3	2.0	3.6
04/11/14	12.2	20.2	28.3	14.3	20.6	27.8	-15.7	5.5	26.0	33.8	61.6	89.0	-1.8	238.3	942.9	0.0	0.0	1.7	3.4
05/11/14	12.7	20.3	32.2	14.0	20.8	31.6	-14.1	7.3	27.7	25.2	68.9	94.4	-1.7	182.6	1020.2	2.5	0.2	1.9	4.5
06/11/14	10.7	18.8	27.7	11.4	19.1	27.4	-11.6	4.7	20.7	36.2	72.0	96.9	-1.8	274.7	974.3	0.0	0.2	2.0	3.8
07/11/14	12.3	19.5	27.5	14.0	19.8	27.0	-9.1	4.3	22.8	37.6	67.5	93.4	-1.7	298.7	998.8	0.0	0.2	2.0	3.6
08/11/14	11.4	20.4	30.7	13.0	20.9	30.5	-12.5	5.5	20.6	19.7	64.2	94.3	-1.8	302.4	975.0	0.0	0.2	1.6	3.2
09/11/14	11.5	22.6	34.9	13.2	23.1	34.8	-9.6	6.1	27.9	22.9	65.0	96.1	-1.8	302.0	929.3	0.0	0.1	2.0	3.7
10/11/14	18.1	22.6	31.1	18.7	22.7	30.7	-9.8	1.3	7.2	39.6	63.7	85.4	-1.7	278.8	914.0	0.0	0.8	2.3	4.1
11/11/14	17.1	19.3	23.7	17.6	19.5	23.3	-7.3	3.0	7.3	45.3	70.6	93.0	-1.7	102.3	673.1	0.0	1.1	2.4	3.7
12/11/14	16.7	20.7	26.7	17.3	20.7	26.2	-11.7	-0.1	7.2	40.8	62.9	80.5	-1.7	333.8	1116.9	0.0	1.0	2.2	3.4
13/11/14	14.4	21.6	31.3	15.3	21.9	30.7	-10.2	3.8	15.0	33.5	63.7	86.9	-1.7	269.6	978.3	0.0	0.9	1.9	2.9
14/11/14	14.7	27.3	40.4	16.3	27.9	39.9	-14.1	8.0	30.8	16.6	56.0	95.4	-1.7	305.6	961.1	0.0	0.0	1.9	3.7
15/11/14	20.2	26.4	37.2	20.6	26.9	37.2	-10.0	5.9	54.6	23.0	47.8	66.3	-1.7	267.0	960.6	0.0	0.5	2.5	3.9
16/11/14	15.1	21.8	30.7	16.1	22.2	30.3	-7.7	5.4	23.0	26.5	59.0	86.6	-1.7	231.0	1067.3	1.4	0.0	2.6	4.3
17/11/14	11.6	22.4	33.0	13.3	22.7	32.5	-19.9	4.2	33.6	16.6	44.5	82.8	-1.8	349.4	1009.8	0.0	0.3	2.0	3.9
18/11/14	15.8	22.2	32.2	17.3	22.5	31.3	-14.4	4.2	29.1	20.8	54.7	76.2	-1.7	308.4	1076.4	0.0	0.3	2.0	3.6
19/11/14	16.2	21.2	27.7	17.3	21.5	26.9	-10.4	4.0	17.9	45.0	65.2	84.7	-1.7	253.0	1128.6	0.0	0.7	2.1	3.6
20/11/14	14.7	25.7	37.7	16.0	26.1	37.3	-14.4	5.9	42.6	18.4	60.1	95.2	-1.7	296.1	1074.2	0.0	0.2	1.9	3.1
21/11/14	18.0	29.7	40.0	19.8	30.7	40.1	-13.9	11.7	39.0	10.4	43.5	81.4	-1.7	264.3	1117.4	0.0	0.5	2.2	4.5
22/11/14	20.8	26.5	36.4	21.2	26.7	36.0	-12.7	3.0	21.5	20.6	54.1	74.6	-1.7	271.2	978.6	0.0	0.8	2.2	3.7
23/11/14	17.1	29.9	45.3	18.2	30.2	44.3	-18.9	3.8	20.3	10.5	53.6	95.4	-1.7	291.3	983.8	0.0	0.1	2.0	3.8
24/11/14	23.1	27.9	39.1	23.6	28.7	38.5	-8.9	9.9	57.3	28.5	64.2	93.4	-1.7	228.5	1024.3	8.5	0.2	1.8	4.9
25/11/14	19.9	24.3	28.9	20.5	24.6	28.8	-8.5	4.4	10.8	38.1	72.3	94.1	-1.7	132.7	680.6	0.9	0.2	2.2	3.5
26/11/14	19.3	22.4	28.8	19.7	22.6	28.3	-8.6	2.4	8.4	49.1	67.1	78.4	-1.7	191.8	1032.4	0.0	1.3	2.2	3.3
27/11/14	19.1	21.7	24.6	19.5	22.0	24.1	-15.7	3.6	9.3	57.4	70.9	83.7	-1.7	114.6	1106.3	0.0	1.3	2.5	3.5
28/11/14	18.1	20.5	24.7	18.6	20.7	24.3	-11.8	1.7	8.7	49.2	65.0	76.9	-1.7	206.0	1277.6	0.0	0.8	2.4	3.8
29/11/14	15.5	22.9	32.3	16.7	23.2	31.7	-10.2	4.2	21.8	23.7	58.9	87.7	-1.8	301.2	1078.0	0.0	0.1	1.9	3.4
30/11/14	13.7	23.4	35.3	15.2	24.0	34.3	-14.6	7.4	30.4	24.4	64.0	94.2	-1.8	248.8	1144.2	2.1	0.1	1.9	3.7
MONTH	8.5	22.9	45.3	10.2	23.3	44.3	-20.5	4.7	57.3	10.4	59.7	96.9	-2.0	257.0	1,277.6	15.4	0.0	2.1	5.0

Appendix B

Surface Water Graphs

SW 15 – Eagles Nest Dam (EPL Discharge Point)



SW 01 – Wollombi Brook Upstream (U/S) near Bulga Township
SW 40 – Wollombi Brook Upstream (U/S) of South Wambo Creek
SW 02 – Wollombi Brook Downstream (D/S) near Warkworth Village

