

# Lee Ranch Mine



## QUICK FACTS



**MINE TYPE**  
Surface



**LOCATION**  
35 miles northwest of Grants, N.M.



**COAL TYPE**  
Thermal



**MINING METHOD**  
Truck/shovel

## DID YOU KNOW?



Operations at Lee Ranch are suspended at this time and all mining activities are conducted at Peabody's adjacent El Segundo Mine.



Since its first year of operation in 1984, Lee Ranch has been honored more than 12 times as New Mexico's safest mine.



In 2006, Lee Ranch was honored by the United States Department of Labor for operating the safest surface mine in the United States.

## MORE INFO

**400,000**  
Tons

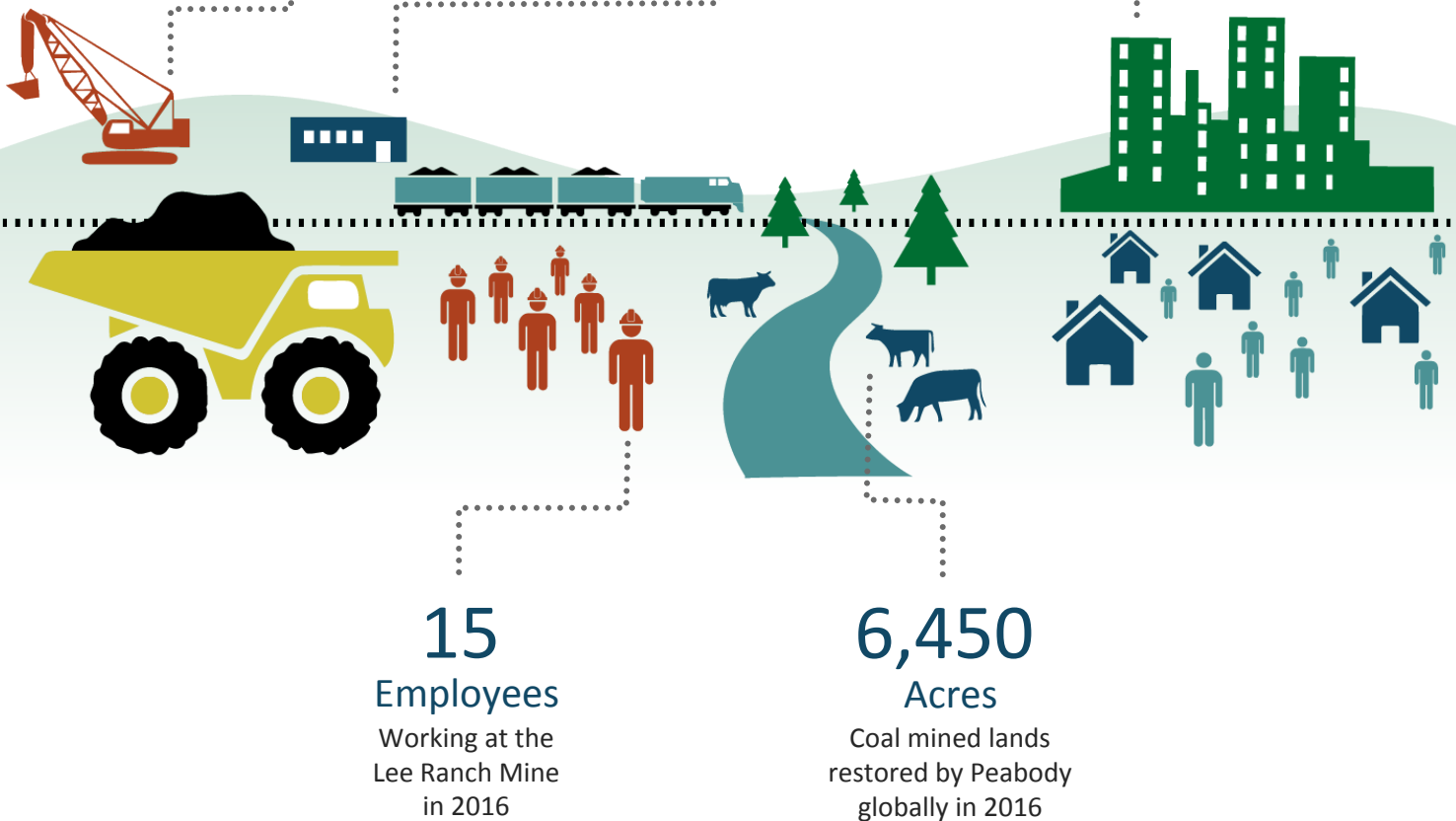
Coal sold from  
the Lee Ranch Mine  
in 2016

**35%**  
Improvement

In Peabody's global  
safety rate since  
2012

**\$15**  
Million

Direct and indirect  
economic benefits from  
the mine in 2016



*Peabody is the world's largest private-sector coal company and a Fortune 500 company. The company is also a leading voice in advocating for sustainable mining, energy access and clean coal technologies. The company serves metallurgical and thermal coal customers in more than 25 countries on five continents.*